



K1751 rabbit pAb

| | |
|----------------------------------|---|
| Catalog No | BYab-08182 |
| Isotype | IgG |
| Reactivity | Human; Mouse |
| Applications | WB |
| Gene Name | KIAA1751 |
| Protein Name | K1751 |
| Immunogen | Synthesized peptide derived from human K1751 AA range: 315-365 |
| Specificity | This antibody detects endogenous levels of K1751 at Human/Mouse |
| Formulation | Liquid in PBS containing 50% glycerol, 0.5% BSA and 0.297% sodium azide. |
| Source | Polyclonal, Rabbit,IgG |
| Purification | The antibody was affinity-purified from rabbit serum by affinity-chromatography using specific immunogen. |
| Dilution | WB 1:500-2000 |
| Concentration | 1 mg/ml |
| Purity | ≥90% |
| Storage Stability | -20°C/1 year |
| Synonyms | Uncharacterized protein KIAA1751 |
| Observed Band | 85kD |
| Cell Pathway | Cytoplasm, cytoskeleton, cilium axoneme . |
| Tissue Specificity | Brain, |
| Function | polymorphism:PubMed:11214970 sequence (BAB21842) differs from that shown due to a possible polymorphism in position 763 that produces a Gln residue instead of a stop codon (dbSNP:rs28548017) and leads to a protein of 768 residues whose C-terminal sequence is Ser-Gln-Ala-Phe-Asp-Val-Lys instead of Ser., |
| Background | |
| matters needing attention | Avoid repeated freezing and thawing! |

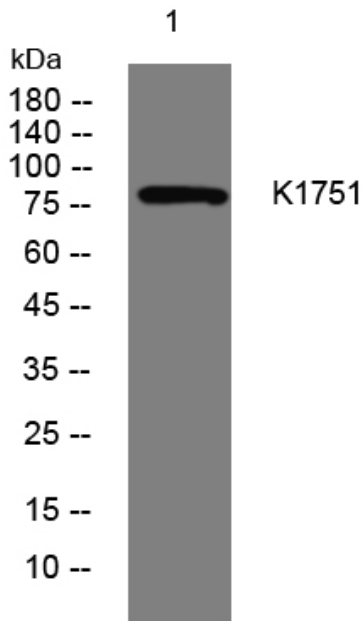
Nanjing BYabscience technology Co.,Ltd



Usage suggestions

This product can be used in immunological reaction related experiments. For more information, please consult technical personnel.

Products Images



Western blot analysis of lysates from THP-1 cells, primary antibody was diluted at 1:1000, 4° over night