



PIWL2 rabbit pAb

Catalog No	BYab-08177
Isotype	IgG
Reactivity	Human; Mouse
Applications	WB
Gene Name	PIWIL2 HILI
Protein Name	PIWL2
Immunogen	Synthesized peptide derived from human PIWL2 AA range: 754-804
Specificity	This antibody detects endogenous levels of PIWL2 at Human/Mouse
Formulation	Liquid in PBS containing 50% glycerol, 0.5% BSA and 0.292% sodium azide.
Source	Polyclonal, Rabbit,IgG
Purification	The antibody was affinity-purified from rabbit serum by affinity-chromatography using specific immunogen.
Dilution	WB 1:500-2000
Concentration	1 mg/ml
Purity	≥90%
Storage Stability	-20°C/1 year
Synonyms	Piwi-like protein 2 (Cancer/testis antigen 80) (CT80)
Observed Band	105kD
Cell Pathway	Cytoplasm . Present in chromatoid body. Probable component of the meiotic nuage, also named P granule, a germ-cell-specific organelle required to repress transposon activity during meiosis. .
Tissue Specificity	Expressed in adult testis and in most tumors.
Function	catalytic activity:3-beta-hydroxy-Delta(5)-steroid + NAD(+) = 3-oxo-Delta(5)-steroid + NADH.,catalytic activity:Cholest-5-ene-3-beta,7-alpha-diol + NAD(+) = 7-alpha-hydroxycholest-4-en-3-one + NADH.,disease:Defects in HSD3B7 are the cause of congenital bile acid synthesis defect type 1 (CBAS1) [MIM:607765]; also known as neonatal progressive intrahepatic cholestasis. CBAS1 is due to a primary defect in bile synthesis leading to progressive liver disease. Clinical features include neonatal jaundice, severe intrahepatic cholestasis and cirrhosis.,function:Plays a central role during spermatogenesis by repressing transposable elements and prevent their mobilization, which is essential for the germline integrity. Plays an essential role in meiotic differentiation of

Nanjing BYabscience technology Co.,Ltd



spermatocytes, germ cell differentiation and in self-renewal of spermatogonial stem cells. Its presence in oocytes suggests tha

Background

PIWIL2 belongs to the Argonaute family of proteins, which function in development and maintenance of germline stem cells (Sasaki et al., 2003 [PubMed 12906857]).[supplied by OMIM, Mar 2008],

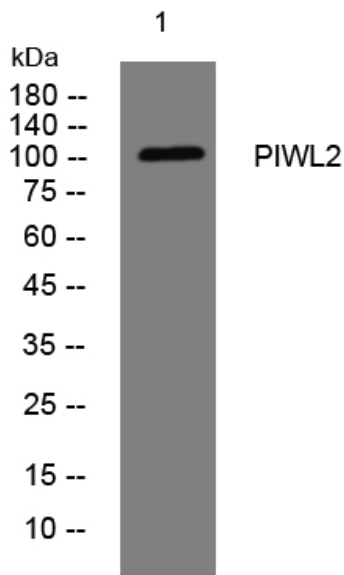
matters needing attention

Avoid repeated freezing and thawing!

Usage suggestions

This product can be used in immunological reaction related experiments. For more information, please consult technical personnel.

Products Images



Western blot analysis of lysates from HeLa cells, primary antibody was diluted at 1:1000, 4° over night