



PCSK6 rabbit pAb

| | |
|---------------------------|--|
| Catalog No | BYab-08164 |
| Isotype | IgG |
| Reactivity | Human;Rat |
| Applications | WB |
| Gene Name | PCSK6 PACE4 |
| Protein Name | PCSK6 |
| Immunogen | Synthesized peptide derived from human PCSK6 AA range: 734-784 |
| Specificity | This antibody detects endogenous levels of PCSK6 at Human/Rat |
| Formulation | Liquid in PBS containing 50% glycerol, 0.5% BSA and 0.279% sodium azide. |
| Source | Polyclonal, Rabbit,IgG |
| Purification | The antibody was affinity-purified from rabbit serum by affinity-chromatography using specific immunogen. |
| Dilution | WB 1:500-2000 |
| Concentration | 1 mg/ml |
| Purity | ≥90% |
| Storage Stability | -20°C/1 year |
| Synonyms | Proprotein convertase subtilisin/kexin type 6 (EC 3.4.21.-) (Paired basic amino acid cleaving enzyme 4) (Subtilisin-like proprotein convertase 4) (SPC4) (Subtilisin/kexin-like protease PACE4) |
| Observed Band | 105kD |
| Cell Pathway | [Isoform PACE4A-I]: Secreted.; [Isoform PACE4A-II]: Secreted.; [Isoform PACE4C]: Endoplasmic reticulum. Not secreted, remains probably in zymogen form in endoplasmic reticulum.; [Isoform PACE4CS]: Endoplasmic reticulum. Not secreted, remains probably in zymogen form in endoplasmic reticulum.; [Isoform PACE4E-I]: Endomembrane system; Peripheral membrane protein. Retained intracellularly probably through a hydrophobic cluster in their C-terminus.; [Isoform PACE4E-II]: Endomembrane system; Peripheral membrane protein. Retained intracellularly probably through a hydrophobic cluster in their C-terminus.; [Isoform PACE4B]: Secreted. |
| Tissue Specificity | Each PACE4 isoform exhibits a unique restricted distribution. Isoform PACE4A-I is expressed in heart, brain, placenta, lung, skeletal muscle, kidney, pancreas, but at comparatively higher levels in the liver. Isoform PACE4A-II is at least expressed in placenta. Isoform PACE4B was only found in the embryonic kidney cell line from which it was isolated. Isoform PACE4C and isoform PACE4D are |

Nanjing BYabscience technology Co.,Ltd



expressed in placenta. Isoform PACE4E-I is expressed in cerebellum, placenta and pituitary. Isoform PACE4E-II is at least present in cerebellum.

Function

catalytic activity:Release of mature proteins from their proproteins by cleavage of Arg-Xaa-Yaa-Arg-|-Zaa bonds, where Xaa can be any amino acid and Yaa is Arg or Lys.,cofactor:Calcium .,domain:The propeptide domain acts as an intramolecular chaperone assisting the folding of the zymogen within the endoplasmic reticulum. Isoform PACE4D lacks the propeptide domain.,function:Likely to represent an endoprotease activity within the constitutive secretory pathway, with unique restricted distribution in both neuroendocrine and non-neuroendocrine tissues and capable of cleavage at the RX(K/R)R consensus motif.,similarity:Belongs to the peptidase S8 family.,similarity:Contains 1 homo B/P domain.,similarity:Contains 1 PLAC domain.,subcellular location:Not secreted, remains probably in zymogen form in endoplasmic reticulum.,subcellular location:Retained intracellularly probably through a hydrophob

Background

This gene encodes a member of the subtilisin-like proprotein convertase family, which includes proteases that process protein and peptide precursors trafficking through regulated or constitutive branches of the secretory pathway. The encoded protein undergoes an initial autocatalytic processing event in the ER to generate a heterodimer which exits the ER and sorts to the trans-Golgi network where a second autocatalytic event takes place and the catalytic activity is acquired. The encoded protease is constitutively secreted into the extracellular matrix and expressed in many tissues, including neuroendocrine, liver, gut, and brain. This gene encodes one of the seven basic amino acid-specific members which cleave their substrates at single or paired basic residues. Some of its substrates include transforming growth factor beta related proteins, proalbumin, and von Willebrand factor. This gene is thought to play a role in tumor progression and left-right patterning. Alternatively spliced transcript variants encoding different isoforms have been identified. [provided by RefSeq, Feb 2014],

matters needing attention

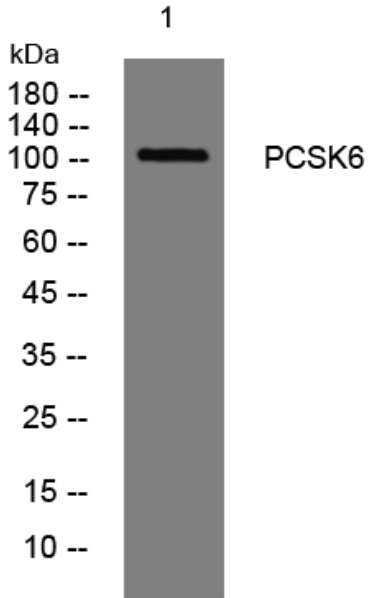
Avoid repeated freezing and thawing!

Usage suggestions

This product can be used in immunological reaction related experiments. For more information, please consult technical personnel.



Products Images



Western blot analysis of lysates from 3T3 cells, primary antibody was diluted at 1:1000, 4°over night