



K0753 rabbit pAb

Catalog No	BYab-08159
Isotype	IgG
Reactivity	Human; Mouse
Applications	WB
Gene Name	KIAA0753
Protein Name	K0753
Immunogen	Synthesized peptide derived from human K0753 AA range: 778-828
Specificity	This antibody detects endogenous levels of K0753 at Human/Mouse
Formulation	Liquid in PBS containing 50% glycerol, 0.5% BSA and 0.274% sodium azide.
Source	Polyclonal, Rabbit,IgG
Purification	The antibody was affinity-purified from rabbit serum by affinity-chromatography using specific immunogen.
Dilution	WB 1:500-2000
Concentration	1 mg/ml
Purity	≥90%
Storage Stability	-20°C/1 year
Synonyms	Uncharacterized protein KIAA0753
Observed Band	105kD
Cell Pathway	Cytoplasm, cytoskeleton, microtubule organizing center, centrosome, centriole . Cytoplasm, cytoskeleton, microtubule organizing center, centrosome, centriolar satellite . Cytoplasm, cytoskeleton, microtubule organizing center, centrosome . Localization to centrioles and pericentriolar satellites may be mediated by interaction with PCM1. .
Tissue Specificity	Brain,Testis,Uterus,
Function	sequence caution:Translated as Glu.,
Background	
matters needing attention	Avoid repeated freezing and thawing!

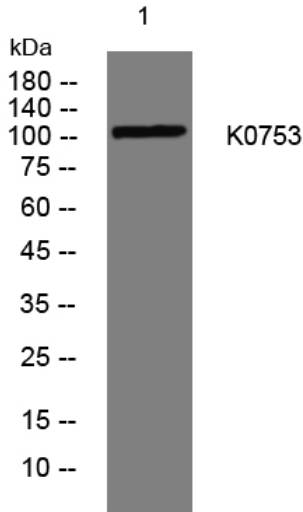
Nanjing BYabscience technology Co.,Ltd



Usage suggestions

This product can be used in immunological reaction related experiments. For more information, please consult technical personnel.

Products Images



Western blot analysis of lysates from U2OS cells, primary antibody was diluted at 1:1000, 4° over night