



# PP6R2 rabbit pAb

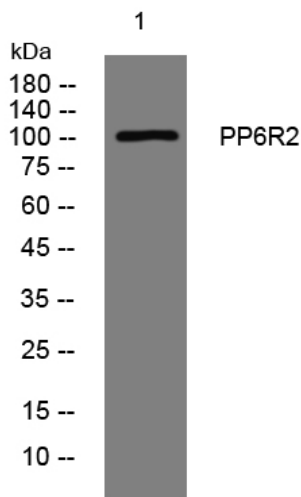
<b>Catalog No</b>	BYab-08158
<b>Isotype</b>	IgG
<b>Reactivity</b>	Human; Mouse
<b>Applications</b>	WB
<b>Gene Name</b>	PPP6R2 KIAA0685 PP6R2 SAPS2
<b>Protein Name</b>	PP6R2
<b>Immunogen</b>	Synthesized peptide derived from human PP6R2 AA range: 59-109
<b>Specificity</b>	This antibody detects endogenous levels of PP6R2 at Human/Mouse
<b>Formulation</b>	Liquid in PBS containing 50% glycerol, 0.5% BSA and 0.273% sodium azide.
<b>Source</b>	Polyclonal, Rabbit,IgG
<b>Purification</b>	The antibody was affinity-purified from rabbit serum by affinity-chromatography using specific immunogen.
<b>Dilution</b>	WB 1:500-2000
<b>Concentration</b>	1 mg/ml
<b>Purity</b>	≥90%
<b>Storage Stability</b>	-20°C/1 year
<b>Synonyms</b>	Serine/threonine-protein phosphatase 6 regulatory subunit 2 (SAPS domain family member 2)
<b>Observed Band</b>	105kD
<b>Cell Pathway</b>	Cytoplasm .
<b>Tissue Specificity</b>	Ubiquitously expressed with strongest expression in the testis followed by liver, heart, kidney, brain and placenta.
<b>Function</b>	function:Regulatory subunit of protein phosphatase 6 (PP6). May function as a scaffolding PP6 subunit. Involved in the PP6-mediated dephosphorylation of NFKBIE opposing its degradation in response to TNF-alpha.,similarity:Belongs to the SAPS family.,subunit:Protein phosphatase 6 (PP6) holoenzyme is proposed to be a heterotrimeric complex formed by the catalytic subunit, a SAPS domain-containing subunit (PP6R) and an ankyrin repeat-domain containing regulatory subunit (ARS). Interacts with PPP6C and NFKBIE. Interacts with ANKRD28.,tissue specificity:Ubiquitously expressed with strongest expression in the testis followed by liver, heart, kidney, brain and placenta.,

Nanjing BYabscience technology Co.,Ltd



<b>Background</b>	Protein phosphatase regulatory subunits, such as SAPS2, modulate the activity of protein phosphatase catalytic subunits by restricting substrate specificity, recruiting substrates, and determining the intracellular localization of the holoenzyme. SAPS2 is a regulatory subunit for the protein phosphatase-6 catalytic subunit (PPP6C; MIM 612725) (Stefansson and Brautigam, 2006 [PubMed 16769727]).[supplied by OMIM, Nov 2010],
<b>matters needing attention</b>	Avoid repeated freezing and thawing!
<b>Usage suggestions</b>	This product can be used in immunological reaction related experiments. For more information, please consult technical personnel.

## Products Images



Western blot analysis of lysates from K562 cells, primary antibody was diluted at 1:1000, 4° over night