



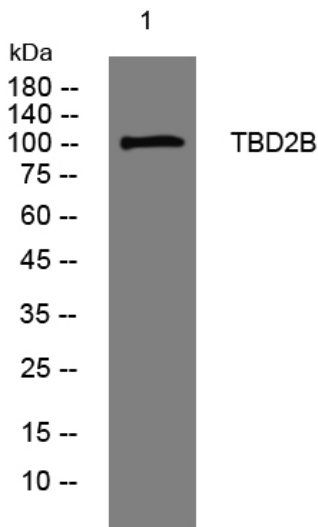
TBD2B rabbit pAb

| | |
|----------------------------------|---|
| Catalog No | BYab-08153 |
| Isotype | IgG |
| Reactivity | Human; Mouse |
| Applications | WB |
| Gene Name | TBC1D2B KIAA1055 |
| Protein Name | TBD2B |
| Immunogen | Synthesized peptide derived from human TBD2B AA range: 755-805 |
| Specificity | This antibody detects endogenous levels of TBD2B at Human/Mouse |
| Formulation | Liquid in PBS containing 50% glycerol, 0.5% BSA and 0.268% sodium azide. |
| Source | Polyclonal, Rabbit,IgG |
| Purification | The antibody was affinity-purified from rabbit serum by affinity-chromatography using specific immunogen. |
| Dilution | WB 1:500-2000 |
| Concentration | 1 mg/ml |
| Purity | ≥90% |
| Storage Stability | -20°C/1 year |
| Synonyms | TBC1 domain family member 2B |
| Observed Band | 105kD |
| Cell Pathway | Early endosome . |
| Tissue Specificity | Brain,Colon,Duodenum,Liver,Testis, |
| Function | function:May act as a GTPase-activating protein.,similarity:Contains 1 PH domain.,similarity:Contains 1 Rab-GAP TBC domain., |
| Background | |
| matters needing attention | Avoid repeated freezing and thawing! |
| Usage suggestions | This product can be used in immunological reaction related experiments. For more information, please consult technical personnel. |

Nanjing BYabscience technology Co.,Ltd



Products Images



Western blot analysis of lysates from KB cells, primary antibody was diluted at 1:1000, 4° over night