



RBM19 rabbit pAb

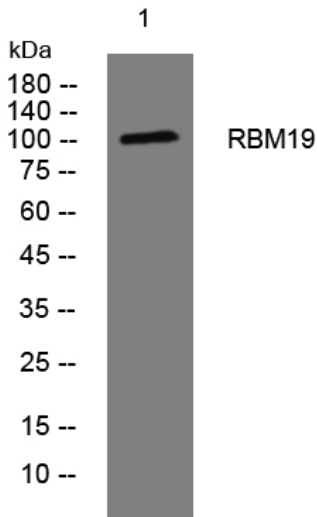
Catalog No	BYab-08139
Isotype	IgG
Reactivity	Human; Mouse
Applications	WB
Gene Name	RBM19 KIAA0682
Protein Name	RBM19
Immunogen	Synthesized peptide derived from human RBM19 AA range: 276-326
Specificity	This antibody detects endogenous levels of RBM19 at Human/Mouse
Formulation	Liquid in PBS containing 50% glycerol, 0.5% BSA and 0.254% sodium azide.
Source	Polyclonal, Rabbit,IgG
Purification	The antibody was affinity-purified from rabbit serum by affinity-chromatography using specific immunogen.
Dilution	WB 1:500-2000
Concentration	1 mg/ml
Purity	≥90%
Storage Stability	-20°C/1 year
Synonyms	Probable RNA-binding protein 19 (RNA-binding motif protein 19)
Observed Band	105kD
Cell Pathway	Nucleus, nucleolus . Nucleus, nucleoplasm . Cytoplasm . Chromosome . In discrete foci distributed throughout the cytoplasm and nucleoplasm during the 4 to 8 cell stages and the morula stage, but not in the periphery of the nucleolar precursor body (NPB). During blastocyst development, becomes increasingly localized to the nucleolus and less to the cytoplasm. At the late blastocyst stage, localized predominantly in the nucleolus. Localized in the nucleolus during interphase and to the perichromosomal sheath during mitosis. Does not colocalize in the cytoplasm with GW182 in P-bodies. May translocate to the nucleolus upon early embryonic development (By similarity). Colocalizes with NPM1 during interphase. By late prophase, metaphase, anaphase and telophase, associates with the chromosome per
Tissue Specificity	Expressed in the crypts of Lieberkuhn of the intestine and in intestinal neoplasia (at protein level).
Function	similarity:Belongs to the RRM MRD1 family.,similarity:Contains 6 RRM (RNA recognition motif) domains.,

Nanjing BYabscience technology Co.,Ltd



Background	This gene encodes a nucleolar protein that contains six RNA-binding motifs. The encoded protein may be involved in regulating ribosome biogenesis. Multiple alternatively spliced variants, encoding the same protein, have been identified.[provided by RefSeq, Apr 2009],
matters needing attention	Avoid repeated freezing and thawing!
Usage suggestions	This product can be used in immunological reaction related experiments. For more information, please consult technical personnel.

Products Images



Western blot analysis of lysates from AD293 cells, primary antibody was diluted at 1:1000, 4° over night