



LONM rabbit pAb

Catalog No	BYab-08136
Isotype	IgG
Reactivity	Human; Mouse;Rat
Applications	WB
Gene Name	LONP1 PRSS15
Protein Name	LONM
Immunogen	Synthesized peptide derived from human LONM AA range: 398-448
Specificity	This antibody detects endogenous levels of LONM at Human/Mouse/Rat
Formulation	Liquid in PBS containing 50% glycerol, 0.5% BSA and 0.251% sodium azide.
Source	Polyclonal, Rabbit,IgG
Purification	The antibody was affinity-purified from rabbit serum by affinity-chromatography using specific immunogen.
Dilution	WB 1:500-2000
Concentration	1 mg/ml
Purity	≥90%
Storage Stability	-20°C/1 year
Synonyms	Lon protease homolog, mitochondrial (EC 3.4.21.-) (LONHs) (Lon protease-like protein) (LONP) (Mitochondrial ATP-dependent protease Lon) (Serine protease 15)
Observed Band	105kD
Cell Pathway	Mitochondrion matrix .
Tissue Specificity	Duodenum, heart, lung and liver, but not thymus.
Function	function:Required for intramitochondrial proteolysis. Catalyzes the initial steps of protein degradation. Hydrolyzes ATP and degrades protein and peptide substrates in an ATP-dependent manner. Binds to single-stranded but not to double-stranded DNA. ,similarity:Belongs to the peptidase S16 family. ,similarity:Contains 1 Lon domain. ,tissue specificity:Duodenum, heart, lung and liver, but not thymus. ,
Background	This gene encodes a mitochondrial matrix protein that belongs to the Lon family of ATP-dependent proteases. This protein mediates the selective degradation of misfolded, unassembled or oxidatively damaged polypeptides in the mitochondrial

Nanjing BYabscience technology Co.,Ltd



matrix. It may also have a chaperone function in the assembly of inner membrane protein complexes, and participate in the regulation of mitochondrial gene expression and maintenance of the integrity of the mitochondrial genome. Decreased expression of this gene has been noted in a patient with hereditary spastic paraplegia (PMID:18378094). Alternatively spliced transcript variants have been found for this gene. [provided by RefSeq, Feb 2013],

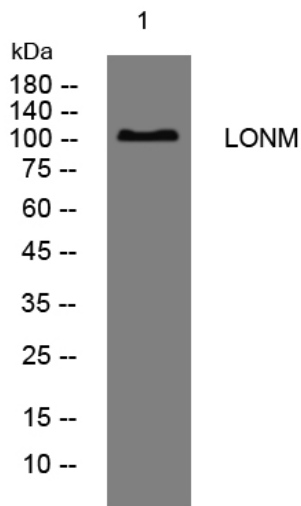
matters needing attention

Avoid repeated freezing and thawing!

Usage suggestions

This product can be used in immunological reaction related experiments. For more information, please consult technical personnel.

Products Images



Western blot analysis of lysates from PC-12 cells, primary antibody was diluted at 1:1000, 4° over night