



RRP44 rabbit pAb

Catalog No	BYab-08135
Isotype	IgG
Reactivity	Human; Mouse
Applications	WB
Gene Name	DIS3 KIAA1008 RRP44
Protein Name	RRP44
Immunogen	Synthesized peptide derived from human RRP44 AA range: 262-312
Specificity	This antibody detects endogenous levels of RRP44 at Human/Mouse
Formulation	Liquid in PBS containing 50% glycerol, 0.5% BSA and 0.250% sodium azide.
Source	Polyclonal, Rabbit,IgG
Purification	The antibody was affinity-purified from rabbit serum by affinity-chromatography using specific immunogen.
Dilution	WB 1:500-2000
Concentration	1 mg/ml
Purity	≥90%
Storage Stability	-20°C/1 year
Synonyms	Exosome complex exonuclease RRP44 (EC 3.1.13.-) (EC 3.1.26.-) (Protein DIS3 homolog) (Ribosomal RNA-processing protein 44)
Observed Band	105kD
Cell Pathway	Cytoplasm . Nucleus, nucleolus . Nucleus, nucleoplasm . Nucleus . Predominantly located in the nucleus (PubMed:20531386). According to PubMed:12429849, found in the nucleolus (PubMed:12429849). According to PubMed:20531386, excluded from nucleolus supporting the existence of a nucleolar RNA exosome complex devoid of DIS3 (PubMed:20531386). .
Tissue Specificity	Widely expressed.
Function	function:Component of the exosome 3'->5' exoribonuclease complex. Required for the 3'-processing of the 7S pre-RNA to the mature nuclear complex. Also associated with the GTPase Ran. Has a 3'-5' exonuclease activity.,similarity:Belongs to the ribonuclease II (RNB) family.,similarity:Contains 1 PINc domain.,subunit:Component of the exosome multienzyme ribonuclease complex composed of at least 11 proteins: RRP4, RRP40, RRP41/SKI6, RRP42, RRP43, RRP44/DIS3, PM/ScI-75, RRP46, CSL4 and PM/ScI-100 (only in the nuclear complex). Also associated with the GTPase Ran.,tissue specificity:Widely

Nanjing BYabscience technology Co.,Ltd



expressed.,

Background

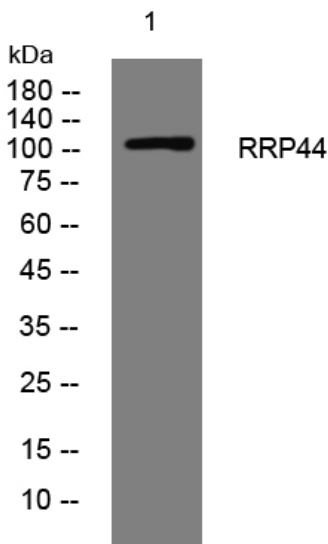
matters needing attention

Avoid repeated freezing and thawing!

Usage suggestions

This product can be used in immunological reaction related experiments. For more information, please consult technical personnel.

Products Images



Western blot analysis of lysates from 293T cells, primary antibody was diluted at 1:1000, 4° over night