



DRP2 rabbit pAb

Catalog No	BYab-08130
Isotype	IgG
Reactivity	Human; Mouse;Rat
Applications	WB
Gene Name	DRP2
Protein Name	DRP2
Immunogen	Synthesized peptide derived from human DRP2 AA range: 437-487
Specificity	This antibody detects endogenous levels of DRP2 at Human/Mouse/Rat
Formulation	Liquid in PBS containing 50% glycerol, 0.5% BSA and 0.245% sodium azide.
Source	Polyclonal, Rabbit,IgG
Purification	The antibody was affinity-purified from rabbit serum by affinity-chromatography using specific immunogen.
Dilution	WB 1:500-2000
Concentration	1 mg/ml
Purity	≥90%
Storage Stability	-20°C/1 year
Synonyms	Dystrophin-related protein 2 (DRP-2)
Observed Band	105kD
Cell Pathway	Cell junction, synapse, postsynaptic density . Cell projection, dendrite . Perikaryon . Cell membrane ; Peripheral membrane protein . Defected in Schwann cells at periaxonal myelin membranes. .
Tissue Specificity	Detected in fetal brain.
Function	function:Possibly involved in membrane-cytoskeleton interactions of the central nervous system.,similarity:Contains 1 WW domain.,similarity:Contains 1 ZZ-type zinc finger.,similarity:Contains 2 spectrin repeats.,tissue specificity:Brain and spinal cord; very low levels in eye, ovary, epididymis and testis; not in cardiac and skeletal muscle.,
Background	Members of the dystrophin family of proteins perform a critical role in the maintenance of membrane-associated complexes at points of intercellular contact in vertebrate cells. The protein encoded by this gene is predicted to resemble certain short C-terminal isoforms of dystrophin and dystrophin-related protein 1 (DRP1 or utrophin). DRP2 is expressed principally in the brain and spinal cord.

Nanjing BYabscience technology Co.,Ltd



Two transcript variants encoding different isoforms have been found for this gene. [provided by RefSeq, Jan 2010],

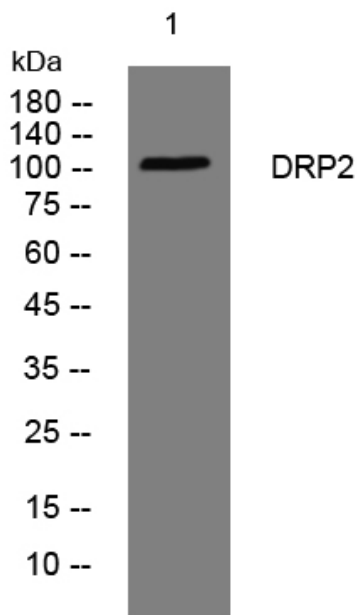
matters needing attention

Avoid repeated freezing and thawing!

Usage suggestions

This product can be used in immunological reaction related experiments. For more information, please consult technical personnel.

Products Images



Western blot analysis of lysates from A431 cells, primary antibody was diluted at 1:1000, 4° over night