



POK6 rabbit pAb

Catalog No	BYab-08128
Isotype	IgG
Reactivity	Human;Rat;Mouse;
Applications	WB
Gene Name	
Protein Name	POK6
Immunogen	Synthesized peptide derived from human POK6 AA range: 691-741
Specificity	This antibody detects endogenous levels of POK6 at Human
Formulation	Liquid in PBS containing 50% glycerol, 0.5% BSA and 0.243% sodium azide.
Source	Polyclonal, Rabbit,IgG
Purification	The antibody was affinity-purified from rabbit serum by affinity-chromatography using specific immunogen.
Dilution	WB 1:500-2000
Concentration	1 mg/ml
Purity	≥90%
Storage Stability	-20°C/1 year
Synonyms	HERV-K_8p23.1 provirus ancestral Pol protein (HERV-K115 Pol protein) [Includes: Reverse transcriptase (RT) (EC 2.7.7.49); Ribonuclease H (RNase H) (EC 3.1.26.4); Integrase (IN)]
Observed Band	105kD
Cell Pathway	plasma membrane,integral component of membrane,viral capsid,viral envelope,
Tissue Specificity	
Function	
Background	
matters needing attention	Avoid repeated freezing and thawing!

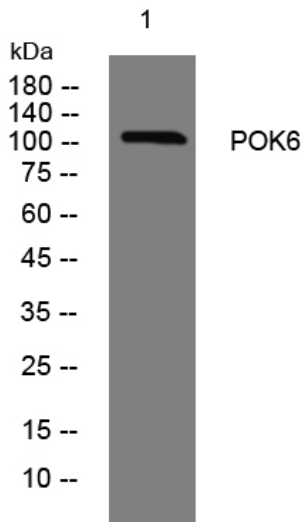
Nanjing BYabscience technology Co.,Ltd



Usage suggestions

This product can be used in immunological reaction related experiments. For more information, please consult technical personnel.

Products Images



Western blot analysis of lysates from U2OS cells, primary antibody was diluted at 1:1000, 4° over night