



POK2 rabbit pAb

Catalog No	BYab-08126
Isotype	IgG
Reactivity	Human;Rat;Mouse;
Applications	WB
Gene Name	ERVK6
Protein Name	POK2
Immunogen	Synthesized peptide derived from human POK2 AA range: 238-288
Specificity	This antibody detects endogenous levels of POK2 at Human
Formulation	Liquid in PBS containing 50% glycerol, 0.5% BSA and 0.241% sodium azide.
Source	Polyclonal, Rabbit,IgG
Purification	The antibody was affinity-purified from rabbit serum by affinity-chromatography using specific immunogen.
Dilution	WB 1:500-2000
Concentration	1 mg/ml
Purity	≥90%
Storage Stability	-20°C/1 year
Synonyms	HERV-K_7p22.1 provirus ancestral Pol protein (HERV-K(C7) Pol protein) (HERV-K(HML-2.HOM) Pol protein) (HERV-K108 Pol protein) [Includes: Reverse transcriptase (RT) (EC 2.7.7.49); Ribonuclease H (RNase H) (EC 3.1.26.4); Integrase (IN)]
Observed Band	105kD
Cell Pathway	
Tissue Specificity	
Function	
Background	
matters needing attention	Avoid repeated freezing and thawing!

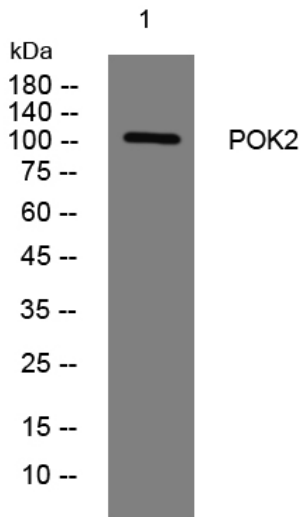
Nanjing BYabscience technology Co.,Ltd



Usage suggestions

This product can be used in immunological reaction related experiments. For more information, please consult technical personnel.

Products Images



Western blot analysis of lysates from HeLa cells, primary antibody was diluted at 1:1000, 4° over night