



HAUS6 rabbit pAb

Catalog No	BYab-08121
Isotype	IgG
Reactivity	Human;Rat;Mouse;
Applications	WB
Gene Name	HAUS6 DGT6 FAM29A KIAA1574
Protein Name	HAUS6
Immunogen	Synthesized peptide derived from human HAUS6 AA range: 476-526
Specificity	This antibody detects endogenous levels of HAUS6 at Human
Formulation	Liquid in PBS containing 50% glycerol, 0.5% BSA and 0.236% sodium azide.
Source	Polyclonal, Rabbit,IgG
Purification	The antibody was affinity-purified from rabbit serum by affinity-chromatography using specific immunogen.
Dilution	WB 1:500-2000
Concentration	1 mg/ml
Purity	≥90%
Storage Stability	-20°C/1 year
Synonyms	HAUS augmin-like complex subunit 6
Observed Band	105kD
Cell Pathway	Cytoplasm, cytoskeleton . Cytoplasm, cytoskeleton, spindle . Cytoplasm, cytoskeleton, microtubule organizing center, centrosome . Localizes to interphase centrosomes and to mitotic spindle microtubules. .
Tissue Specificity	Lung,PCR rescued clones,Uterus,
Function	
Background	The protein encoded by this gene is a subunit of the augmin complex. The augmin complex plays a role in microtubule attachment to the kinetochore and central spindle formation. This protein may have a role in efficient chromosome congression and segregation by promoting microtubule-dependent microtubule amplification. Pseudogenes of this gene are located on chromosomes 7 and 20. Alternative splicing results in multiple transcript variants that encode different protein isoforms. [provided by RefSeq, Aug 2012],

Nanjing BYabscience technology Co.,Ltd



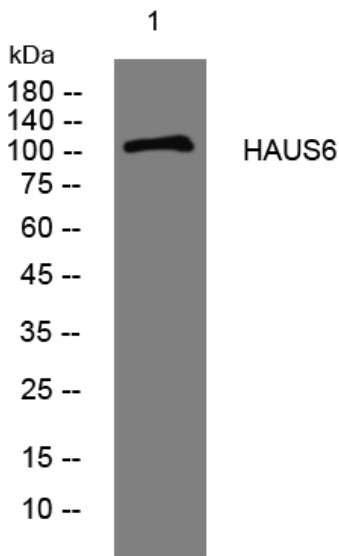
matters needing attention

Avoid repeated freezing and thawing!

Usage suggestions

This product can be used in immunological reaction related experiments. For more information, please consult technical personnel.

Products Images



Western blot analysis of lysates from Hela cells, primary antibody was diluted at 1:1000, 4° over night