



CSTN2 rabbit pAb

Catalog No	BYab-08120
Isotype	IgG
Reactivity	Human; Mouse;Rat
Applications	WB
Gene Name	CLSTN2 CS2
Protein Name	CSTN2
Immunogen	Synthesized peptide derived from human CSTN2 AA range: 494-544
Specificity	This antibody detects endogenous levels of CSTN2 at Human/Mouse/Rat
Formulation	Liquid in PBS containing 50% glycerol, 0.5% BSA and 0.235% sodium azide.
Source	Polyclonal, Rabbit,IgG
Purification	The antibody was affinity-purified from rabbit serum by affinity-chromatography using specific immunogen.
Dilution	WB 1:500-2000
Concentration	1 mg/ml
Purity	≥90%
Storage Stability	-20°C/1 year
Synonyms	Calsyntenin-2 (Alcadein-gamma) (Alc-gamma)
Observed Band	105kD
Cell Pathway	Cell membrane ; Single-pass type I membrane protein . Endoplasmic reticulum membrane . Golgi apparatus membrane . Cell junction, synapse, postsynapse . Cell projection, dendrite . Most prominent in the postsynaptic specializations of asymmetric (type I) synapses with both axodendritic and axospinous localization. .
Tissue Specificity	Restricted to the brain.
Function	domain: Binds synaptic Ca(2+) with its cytoplasmic domain.,function: May modulate calcium-mediated postsynaptic signals.,PTM: Proteolytically processed under normal cellular conditions. A primary zeta-cleavage generates a large extracellular (soluble) N-terminal domain (sAlc) and a short C-terminal transmembrane fragment (CTF1). A secondary cleavage catalyzed by gamma-secretase within the transmembrane domain releases the beta-Alc-gamma chain in the extracellular milieu and produces an intracellular fragment (AlcICD). This processing is strongly suppressed in the tripartite complex formed with APBA2 and APP, which seems to prevent the association with PSEN1.,similarity: Contains 2 cadherin domains.,subcellular location: Most

Nanjing BYabscience technology Co.,Ltd



prominent in the postsynaptic specializations of asymmetric (type I) synapses with both axodendritic and axospinous localization.,tissue specificity:Restricted to the bra

Background

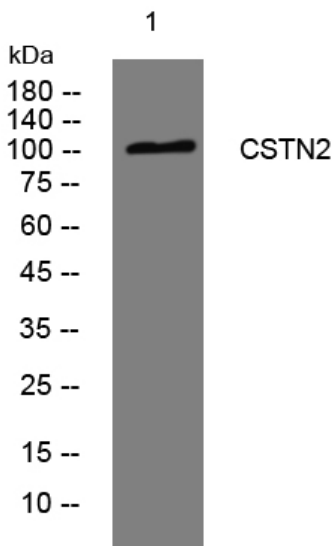
matters needing attention

Avoid repeated freezing and thawing!

Usage suggestions

This product can be used in immunological reaction related experiments. For more information, please consult technical personnel.

Products Images



Western blot analysis of lysates from 293T cells, primary antibody was diluted at 1:1000, 4° over night