



# POK17 rabbit pAb

<b>Catalog No</b>	BYab-08114
<b>Isotype</b>	IgG
<b>Reactivity</b>	Human;Rat;Mouse;
<b>Applications</b>	WB
<b>Gene Name</b>	
<b>Protein Name</b>	POK17
<b>Immunogen</b>	Synthesized peptide derived from human POK17 AA range: 351-401
<b>Specificity</b>	This antibody detects endogenous levels of POK17 at Human
<b>Formulation</b>	Liquid in PBS containing 50% glycerol, 0.5% BSA and 0.229% sodium azide.
<b>Source</b>	Polyclonal, Rabbit,IgG
<b>Purification</b>	The antibody was affinity-purified from rabbit serum by affinity-chromatography using specific immunogen.
<b>Dilution</b>	WB 1:500-2000
<b>Concentration</b>	1 mg/ml
<b>Purity</b>	≥90%
<b>Storage Stability</b>	-20°C/1 year
<b>Synonyms</b>	HERV-K_11q22.1 provirus ancestral Pol protein [Includes: Reverse transcriptase (RT) (EC 2.7.7.49); Ribonuclease H (RNase H) (EC 3.1.26.4); Integrase (IN)]
<b>Observed Band</b>	105kD
<b>Cell Pathway</b>	
<b>Tissue Specificity</b>	
<b>Function</b>	catalytic activity:Deoxynucleoside triphosphate + DNA(n) = diphosphate + DNA(n+1).,catalytic activity:Endonucleolytic cleavage to 5'-phosphomonoester.,domain:The LPQG and YXDD motifs are catalytically important and conserved among many retroviruses.,function:Early post-infection, the reverse transcriptase converts the viral RNA genome into double-stranded viral DNA. The RNase H domain of the reverse transcriptase performs two functions. It degrades the RNA template and specifically removes the RNA primer from the RNA/DNA hybrid. Following nuclear import, the integrase catalyzes the insertion of the linear, double-stranded viral DNA into the host cell chromosome. Endogenous Pol proteins may have kept, lost or modified their original function during evolution.,miscellaneous:Exact N-terminus of this protein has not been

Nanjing BYabscience technology Co.,Ltd



formally described.,miscellaneous:This protein is synthesized as Gag-Pr

## Background

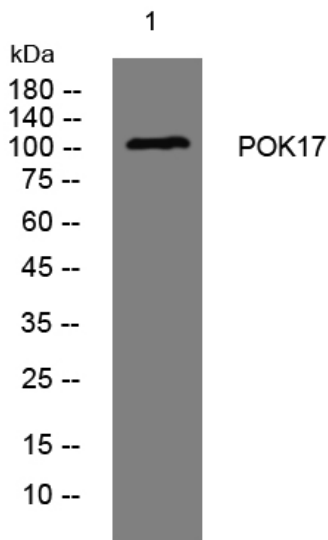
### matters needing attention

Avoid repeated freezing and thawing!

### Usage suggestions

This product can be used in immunological reaction related experiments. For more information, please consult technical personnel.

## Products Images



Western blot analysis of lysates from SW480 cells, primary antibody was diluted at 1:1000, 4° over night