



# SAFB2 rabbit pAb

<b>Catalog No</b>	BYab-08111
<b>Isotype</b>	IgG
<b>Reactivity</b>	Human; Mouse
<b>Applications</b>	WB
<b>Gene Name</b>	SAFB2 KIAA0138
<b>Protein Name</b>	SAFB2
<b>Immunogen</b>	Synthesized peptide derived from human SAFB2 AA range: 737-787
<b>Specificity</b>	This antibody detects endogenous levels of SAFB2 at Human/Mouse
<b>Formulation</b>	Liquid in PBS containing 50% glycerol, 0.5% BSA and 0.226% sodium azide.
<b>Source</b>	Polyclonal, Rabbit,IgG
<b>Purification</b>	The antibody was affinity-purified from rabbit serum by affinity-chromatography using specific immunogen.
<b>Dilution</b>	WB 1:500-2000
<b>Concentration</b>	1 mg/ml
<b>Purity</b>	≥90%
<b>Storage Stability</b>	-20°C/1 year
<b>Synonyms</b>	Scaffold attachment factor B2 (SAF-B2)
<b>Observed Band</b>	105kD
<b>Cell Pathway</b>	Cytoplasm. Nucleus.
<b>Tissue Specificity</b>	Expressed at high levels in the CNS and at low levels in the liver. Expressed in a wide number of breast cancer cell lines.
<b>Function</b>	function: Binds to scaffold/matrix attachment region (S/MAR) DNA. Can function as an estrogen receptor corepressor and can also inhibit cell proliferation.,PTM: Phosphorylated upon DNA damage, probably by ATM or ATR.,similarity: Contains 1 RRM (RNA recognition motif) domain.,similarity: Contains 1 SAP domain.,subunit: Interacts with SAFB/SAFB1 and SCAM1.,tissue specificity: Expressed at high levels in the CNS and at low levels in the liver. Expressed in a wide number of breast cancer cell lines.,
<b>Background</b>	The protein encoded by this gene, along with its paralog (scaffold attachment factor B1), is a repressor of estrogen receptor alpha. The encoded protein binds scaffold/matrix attachment region (S/MAR) DNA and is involved in cell cycle regulation, apoptosis, differentiation, the stress response, and regulation of

Nanjing BYabscience technology Co.,Ltd



immune genes. [provided by RefSeq, May 2016],

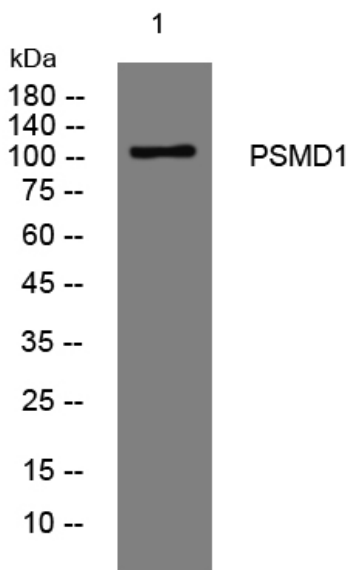
**matters needing attention**

Avoid repeated freezing and thawing!

**Usage suggestions**

This product can be used in immunological reaction related experiments. For more information, please consult technical personnel.

## Products Images



Western blot analysis of lysates from K562 cells, primary antibody was diluted at 1:1000, 4°over night

Nanjing BYabscience technology Co.,Ltd