



AL2CL rabbit pAb

Catalog No	BYab-08107
Isotype	IgG
Reactivity	Human; Mouse
Applications	WB
Gene Name	ALS2CL
Protein Name	AL2CL
Immunogen	Synthesized peptide derived from human AL2CL AA range: 606-656
Specificity	This antibody detects endogenous levels of AL2CL at Human/Mouse
Formulation	Liquid in PBS containing 50% glycerol, 0.5% BSA and 0.222% sodium azide.
Source	Polyclonal, Rabbit,IgG
Purification	The antibody was affinity-purified from rabbit serum by affinity-chromatography using specific immunogen.
Dilution	WB 1:500-2000
Concentration	1 mg/ml
Purity	≥90%
Storage Stability	-20°C/1 year
Synonyms	ALS2 C-terminal-like protein
Observed Band	105kD
Cell Pathway	Cytoplasm . Distributed onto the vesicular compartments in the cytoplasm with strong punctated staining. Colocalizes with RAB5A onto the vesicular/membranous compartments in the cytoplasm, particularly to the leading edges of the cells.
Tissue Specificity	Expressed in heart and kidney.
Function	function:Acts as a guanine nucleotide exchange factor (GEF) for Rab5 GTPase. Regulates the ALS2-mediated endosome dynamics.,similarity:Contains 1 VPS9 domain.,similarity:Contains 8 MORN repeats.,subcellular location:Distributed onto the vesicular compartments in the cytoplasm with strong punctated staining. Colocalizes with RAB5A onto the vesicular/membranous compartments in the cytoplasm, particularly to the leading edges of the cells.,subunit:Homodimer. Forms a heteromeric complex with ALS2 (By similarity). Interacts with ALS2 and RAB5A.,tissue specificity:Expressed in heart and kidney.,

Nanjing BYabscience technology Co.,Ltd



Background

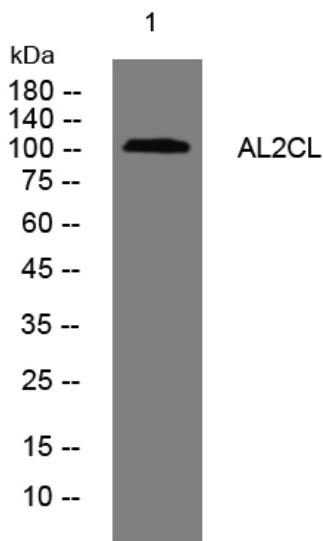
matters needing attention

Avoid repeated freezing and thawing!

Usage suggestions

This product can be used in immunological reaction related experiments. For more information, please consult technical personnel.

Products Images



Western blot analysis of lysates from HuvEc cells, primary antibody was diluted at 1:1000, 4°over night