



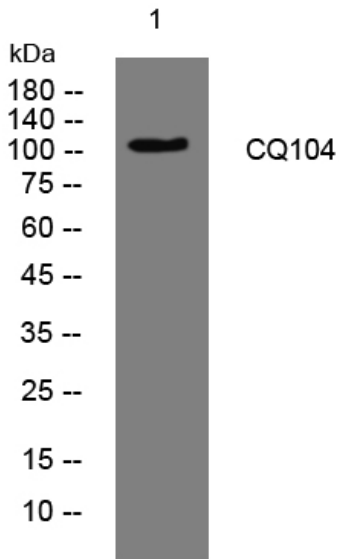
# CQ104 rabbit pAb

|                                  |   |
|----------------------------------|---|
| <b>Catalog No</b>                | BYab-08105  |
| <b>Isotype</b>                   | IgG   |
| <b>Reactivity</b>                | Human; Mouse  |
| <b>Applications</b>              | WB  |
| <b>Gene Name</b>                 | C17orf104   |
| <b>Protein Name</b>              | CQ104   |
| <b>Immunogen</b>                 | Synthesized peptide derived from human CQ104 AA range: 218-268  |
| <b>Specificity</b>               | This antibody detects endogenous levels of CQ104 at Human/Mouse   |
| <b>Formulation</b>               | Liquid in PBS containing 50% glycerol, 0.5% BSA and 0.220% sodium azide.  |
| <b>Source</b>                    | Polyclonal, Rabbit,IgG  |
| <b>Purification</b>              | The antibody was affinity-purified from rabbit serum by affinity-chromatography using specific immunogen.                             |
| <b>Dilution</b>                  | WB 1:500-2000   |
| <b>Concentration</b>             | 1 mg/ml   |
| <b>Purity</b>                    | ≥90%  |
| <b>Storage Stability</b>         | -20°C/1 year  |
| <b>Synonyms</b>                  | Uncharacterized protein C17orf104   |
| <b>Observed Band</b>             | 105kD   |
| <b>Cell Pathway</b>              | Cytoplasm . Nucleus . at late pachytene a fraction is nuclear. .  |
| <b>Tissue Specificity</b>        | Expressed in fetal ovaries (PubMed:26742488). Expressed in testis (PubMed:28380054).  |
| <b>Function</b>                  | caution:The sequence shown here is derived from an Ensembl automatic analysis pipeline and should be considered as preliminary data., |
| <b>Background</b>                |   |
| <b>matters needing attention</b> | Avoid repeated freezing and thawing!  |
| <b>Usage suggestions</b>         | This product can be used in immunological reaction related experiments. For more information, please consult technical personnel.     |

**Nanjing BYabscience technology Co.,Ltd**



## Products Images



Western blot analysis of lysates from K562 cells,  
primary antibody was diluted at 1:1000, 4° over night