



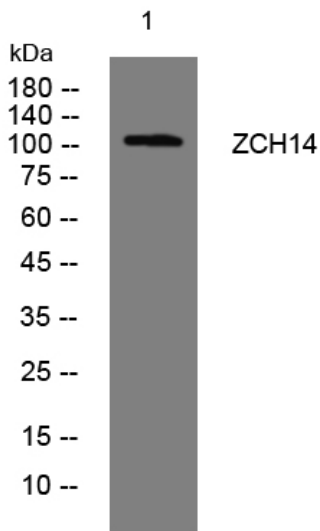
ZCH14 rabbit pAb

Catalog No	BYab-08091
Isotype	IgG
Reactivity	Human; Mouse
Applications	WB
Gene Name	ZCCHC14 KIAA0579
Protein Name	ZCH14
Immunogen	Synthesized peptide derived from human ZCH14 AA range: 493-543
Specificity	This antibody detects endogenous levels of ZCH14 at Human/Mouse
Formulation	Liquid in PBS containing 50% glycerol, 0.5% BSA and 0.206% sodium azide.
Source	Polyclonal, Rabbit,IgG
Purification	The antibody was affinity-purified from rabbit serum by affinity-chromatography using specific immunogen.
Dilution	WB 1:500-2000
Concentration	1 mg/ml
Purity	≥90%
Storage Stability	-20°C/1 year
Synonyms	Zinc finger CCHC domain-containing protein 14 (BDG-29)
Observed Band	105kD
Cell Pathway	
Tissue Specificity	Brain, Testis,
Function	similarity:Contains 1 CCHC-type zinc finger.,
Background	
matters needing attention	Avoid repeated freezing and thawing!
Usage suggestions	This product can be used in immunological reaction related experiments. For more information, please consult technical personnel.

Nanjing BYabscience technology Co.,Ltd



Products Images



Western blot analysis of lysates from AD293 cells,
primary antibody was diluted at 1:1000, 4° over night