



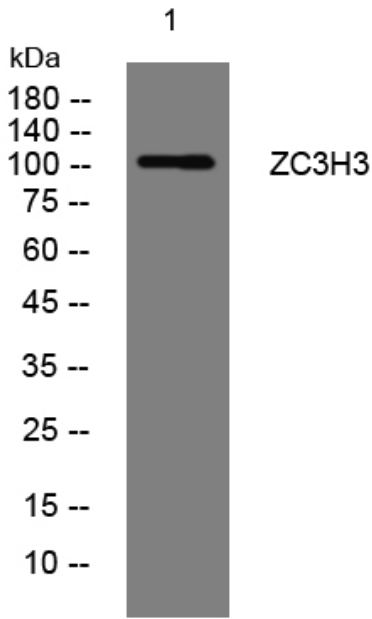
ZC3H3 rabbit pAb

Catalog No	BYab-08085
Isotype	IgG
Reactivity	Human; Mouse
Applications	WB
Gene Name	ZC3H3 KIAA0150 ZC3HDC3
Protein Name	ZC3H3
Immunogen	Synthesized peptide derived from human ZC3H3 AA range: 818-868
Specificity	This antibody detects endogenous levels of ZC3H3 at Human/Mouse
Formulation	Liquid in PBS containing 50% glycerol, 0.5% BSA and 0.200% sodium azide.
Source	Polyclonal, Rabbit,IgG
Purification	The antibody was affinity-purified from rabbit serum by affinity-chromatography using specific immunogen.
Dilution	WB 1:500-2000
Concentration	1 mg/ml
Purity	≥90%
Storage Stability	-20°C/1 year
Synonyms	Zinc finger CCCH domain-containing protein 3
Observed Band	105kD
Cell Pathway	Nucleus .
Tissue Specificity	Bone marrow,Brain,Cervix,Epithelium,
Function	similarity:Contains 5 C3H1-type zinc fingers.,
Background	
matters needing attention	Avoid repeated freezing and thawing!
Usage suggestions	This product can be used in immunological reaction related experiments. For more information, please consult technical personnel.

Nanjing BYabscience technology Co.,Ltd



Products Images



Western blot analysis of lysates from HCT116 cells,
primary antibody was diluted at 1:1000, 4° over night