



DPYL3 rabbit pAb

| | |
|---------------------------|---|
| Catalog No | BYab-08064 |
| Isotype | IgG |
| Reactivity | Human; Mouse;Rat |
| Applications | WB |
| Gene Name | DPYSL3 CRMP4 DRP3 ULIP ULIP1 |
| Protein Name | DPYL3 |
| Immunogen | Synthesized peptide derived from human DPYL3 AA range: 240-290 |
| Specificity | This antibody detects endogenous levels of DPYL3 at Human/Mouse/Rat |
| Formulation | Liquid in PBS containing 50% glycerol, 0.5% BSA and 0.179% sodium azide. |
| Source | Polyclonal, Rabbit,IgG |
| Purification | The antibody was affinity-purified from rabbit serum by affinity-chromatography using specific immunogen. |
| Dilution | WB 1:500-2000 |
| Concentration | 1 mg/ml |
| Purity | ≥90% |
| Storage Stability | -20°C/1 year |
| Synonyms | Dihydropyrimidinase-related protein 3 (DRP-3) (Collapsin response mediator protein 4) (CRMP-4) (Unc-33-like phosphoprotein 1) (ULIP-1) |
| Observed Band | 65kD |
| Cell Pathway | Cytoplasm . Cell projection, growth cone . Colocalizes with synaptic vesicle protein 2 in the central region of the growth cone. . |
| Tissue Specificity | Mainly expressed in heart and skeletal muscle. Also strongly expressed in fetal brain and spinal cord. |
| Function | function:Necessary for signaling by class 3 semaphorins and subsequent remodeling of the cytoskeleton. Plays a role in axon guidance, neuronal growth cone collapse and cell migration.,similarity:Belongs to the DHOase family. Hydantoinase/dihydropyrimidinase subfamily.,subcellular location:Colocalizes with synaptic vesicle protein 2 in the central region of the growth cone.,subunit:Homotetramer, and heterotetramer with CRMP1, DPYSL2, DPYSL4 or DPYSL5 (By similarity). Interacts with synaptic vesicle protein 2 and SH3A domain of intersectin.,tissue specificity:Mainly in heart and skeletal muscle. Also expressed strongly in fetal brain and spinal cord., |

Nanjing BYabscience technology Co.,Ltd



Background

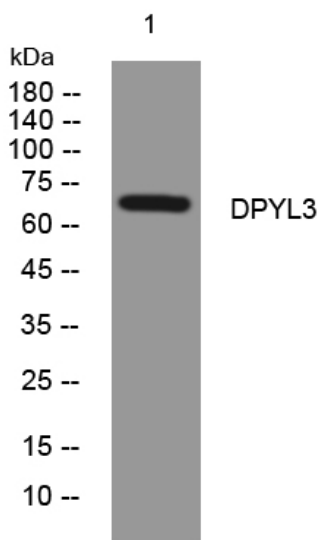
matters needing attention

Avoid repeated freezing and thawing!

Usage suggestions

This product can be used in immunological reaction related experiments. For more information, please consult technical personnel.

Products Images



Western blot analysis of lysates from MDA-MB cells, primary antibody was diluted at 1:1000, 4° over night