



# MEX3B rabbit pAb

<b>Catalog No</b>	BYab-08054
<b>Isotype</b>	IgG
<b>Reactivity</b>	Human; Mouse
<b>Applications</b>	WB
<b>Gene Name</b>	MEX3B KIAA2009 RKHD3 RNF195
<b>Protein Name</b>	MEX3B
<b>Immunogen</b>	Synthesized peptide derived from human MEX3B AA range: 434-484
<b>Specificity</b>	This antibody detects endogenous levels of MEX3B at Human/Mouse
<b>Formulation</b>	Liquid in PBS containing 50% glycerol, 0.5% BSA and 0.168% sodium azide.
<b>Source</b>	Polyclonal, Rabbit,IgG
<b>Purification</b>	The antibody was affinity-purified from rabbit serum by affinity-chromatography using specific immunogen.
<b>Dilution</b>	WB 1:500-2000
<b>Concentration</b>	1 mg/ml
<b>Purity</b>	≥90%
<b>Storage Stability</b>	-20°C/1 year
<b>Synonyms</b>	RNA-binding protein MEX3B (RING finger and KH domain-containing protein 3) (RING finger protein 195)
<b>Observed Band</b>	60kD
<b>Cell Pathway</b>	Nucleus . Cytoplasm . Cytoplasm, P-body . Cytoplasmic granule . Predominantly expressed in the cytoplasm and shuttles between the cytoplasm and the nucleus through the CRM1 export pathway. Localization to P-bodies is dependent on 14-3-3.
<b>Tissue Specificity</b>	Highest levels found in fetal brain and testis. Detected in the adult intestinal epithelium, specifically in goblet cell at protein level.
<b>Function</b>	domain: Binds RNA through its KH domains.,function: RNA-binding protein. May be involved in post-transcriptional regulatory mechanisms.,PTM: Phosphorylated.,similarity: Contains 1 RING-type zinc finger.,similarity: Contains 2 KH domains.,subcellular location: Predominantly expressed in the cytoplasm and shuttles between the cytoplasm and the nucleus through the CRM1 export pathway.,tissue specificity: Highest levels found in fetal brain and testis. Detected in the adult intestinal epithelium, specifically in goblet cell at protein level.,

Nanjing BYabscience technology Co.,Ltd



### Background

This gene encodes an RNA-binding phosphoprotein that is part of the MEX3 (muscle excess 3) family of translational regulators. The encoded protein contains N-terminal nuclear export and nuclear localization signals and is exported from the cytoplasm to the nucleus. The protein binds to RNA via two KH domains and also colocalizes with MEX3A, Dcp1A decapping factor and Argonaute proteins within P (processing) bodies. [provided by RefSeq, Oct 2012],

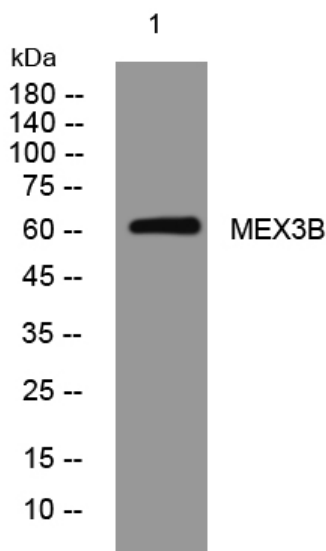
### matters needing attention

Avoid repeated freezing and thawing!

### Usage suggestions

This product can be used in immunological reaction related experiments. For more information, please consult technical personnel.

## Products Images



Western blot analysis of lysates from PC-12 cells, primary antibody was diluted at 1:1000, 4° over night