



## GGT2 rabbit pAb

<b>Catalog No</b>	BYab-08052
<b>Isotype</b>	IgG
<b>Reactivity</b>	Human;Rat;Mouse;
<b>Applications</b>	WB
<b>Gene Name</b>	GGT2
<b>Protein Name</b>	GGT2
<b>Immunogen</b>	Synthesized peptide derived from human GGT2 AA range: 89-139
<b>Specificity</b>	This antibody detects endogenous levels of GGT2 at Human
<b>Formulation</b>	Liquid in PBS containing 50% glycerol, 0.5% BSA and 0.166% sodium azide.
<b>Source</b>	Polyclonal, Rabbit,IgG
<b>Purification</b>	The antibody was affinity-purified from rabbit serum by affinity-chromatography using specific immunogen.
<b>Dilution</b>	WB 1:500-2000
<b>Concentration</b>	1 mg/ml
<b>Purity</b>	≥90%
<b>Storage Stability</b>	-20°C/1 year
<b>Synonyms</b>	Gamma-glutamyltranspeptidase 2 (GGT 2) (EC 2.3.2.2) (Gamma-glutamyltransferase 2) (Glutathione hydrolase 2) (EC 3.4.19.13) [Cleaved into: Gamma-glutamyltranspeptidase 2 heavy chain; Gamma-glutamyltranspeptidase 2 light chain]
<b>Observed Band</b>	60kD
<b>Cell Pathway</b>	Cytoplasm, perinuclear region . Endoplasmic reticulum . Co-localizes with calnexin in the endoplasmic reticulum.
<b>Tissue Specificity</b>	Highly expressed in fetal and adult kidney and liver.
<b>Function</b>	catalytic activity:(5-L-glutamyl)-peptide + an amino acid = peptide + 5-L-glutamyl amino acid.,disease:Defects in GGT1 are a cause of glutathionuria [MIM:231950]; also known as gamma-glutamyltranspeptidase deficiency. It is an autosomal recessive disease.,function:Initiates extracellular glutathione (GSH) breakdown, provides cells with a local cysteine supply and contributes to maintain intracellular GSH level. It is part of the cell antioxidant defense mechanism. Catalyzes the transfer of the glutamyl moiety of glutathione to amino acids and dipeptide acceptors. Alternatively, glutathione can be hydrolyzed to give Cys-Gly and

Nanjing BYabscience technology Co.,Ltd



gamma glutamate. Isoform 3 seems to be inactive.,function:Initiates extracellular glutathione (GSH) breakdown; catalyzes the transfer of the glutamyl moiety of glutathione to amino acids and dipeptide acceptors.,miscellaneous:Corresponds to the light chain of other

**Background**

GGT2 belongs to the gamma-glutamyltransferase (GGT; EC 2.3.2.2) gene family. GGT is a membrane-bound extracellular enzyme that cleaves gamma-glutamyl peptide bonds in glutathione and other peptides and transfers the gamma-glutamyl moiety to acceptors. GGT is also key to glutathione homeostasis because it provides substrates for glutathione synthesis (Heisterkamp et al., 2008 [PubMed 18357469]).[supplied by OMIM, Oct 2008],

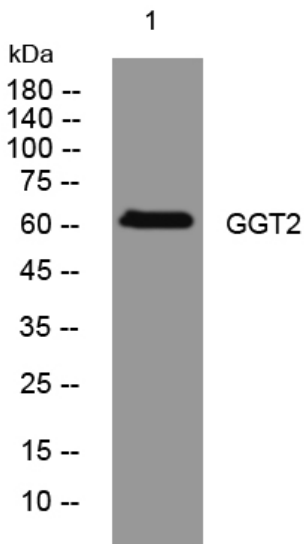
**matters needing attention**

Avoid repeated freezing and thawing!

**Usage suggestions**

This product can be used in immunological reaction related experiments. For more information, please consult technical personnel.

**Products Images**



Western blot analysis of lysates from AD293 cells, primary antibody was diluted at 1:1000, 4° over night