



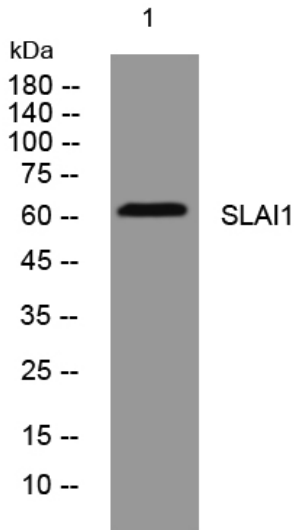
SLAI1 rabbit pAb

Catalog No	BYab-08045
Isotype	IgG
Reactivity	Human; Mouse
Applications	WB
Gene Name	SLAIN1 C13orf32
Protein Name	SLAI1
Immunogen	Synthesized peptide derived from human SLAI1 AA range: 479-529
Specificity	This antibody detects endogenous levels of SLAI1 at Human/Mouse
Formulation	Liquid in PBS containing 50% glycerol, 0.5% BSA and 0.159% sodium azide.
Source	Polyclonal, Rabbit,IgG
Purification	The antibody was affinity-purified from rabbit serum by affinity-chromatography using specific immunogen.
Dilution	WB 1:500-2000
Concentration	1 mg/ml
Purity	≥90%
Storage Stability	-20°C/1 year
Synonyms	SLAIN motif-containing protein 1
Observed Band	60kD
Cell Pathway	Cytoplasm, cytoskeleton . Colocalizes with microtubules. Detected at the plus end of growing microtubules. .
Tissue Specificity	Expressed in embryonic stem cells (PubMed:16546155). Expressed in brain (PubMed:21646404).
Function	similarity:Belongs to the SLAIN motif-containing family.,tissue specificity:Expressed in embryonic stem cells.,
Background	
matters needing attention	Avoid repeated freezing and thawing!
Usage suggestions	This product can be used in immunological reaction related experiments. For more information, please consult technical personnel.

Nanjing BYabscience technology Co.,Ltd



Products Images



Western blot analysis of lysates from HeLa cells,
primary antibody was diluted at 1:1000, 4° over night