



SGPL1 rabbit pAb

Catalog No	BYab-08044
Isotype	IgG
Reactivity	Human; Mouse;Rat
Applications	WB
Gene Name	SGPL1 KIAA1252
Protein Name	SGPL1
Immunogen	Synthesized peptide derived from human SGPL1 AA range: 393-443
Specificity	This antibody detects endogenous levels of SGPL1 at Human/Mouse/Rat
Formulation	Liquid in PBS containing 50% glycerol, 0.5% BSA and 0.158% sodium azide.
Source	Polyclonal, Rabbit,IgG
Purification	The antibody was affinity-purified from rabbit serum by affinity-chromatography using specific immunogen.
Dilution	WB 1:500-2000
Concentration	1 mg/ml
Purity	≥90%
Storage Stability	-20°C/1 year
Synonyms	Sphingosine-1-phosphate lyase 1 (S1PL) (SP-lyase 1) (SPL 1) (hSPL) (EC 4.1.2.27) (Sphingosine-1-phosphate aldolase)
Observed Band	60kD
Cell Pathway	Endoplasmic reticulum membrane ; Single-pass type III membrane protein ; Cytoplasmic side .
Tissue Specificity	Ubiquitously expressed (PubMed:11018465, PubMed:28165343). Expressed in fetal and adult adrenal gland (at protein level) (PubMed:28165343).
Function	catalytic activity:Sphinganine 1-phosphate = phosphoethanolamine + palmitaldehyde.,cofactor:Pyridoxal phosphate.,function:Cleaves phosphorylated sphingoid bases (PSBs), such as sphingosine-1-phosphate, into fatty aldehydes and phosphoethanolamine. Elevates stress-induced ceramide production and apoptosis.,pathway:Lipid metabolism; sphingolipid metabolism.,similarity:Belongs to the group II decarboxylase family. Sphingosine-1-phosphate lyase subfamily.,tissue specificity:Found in liver and kidney.,

Background

Nanjing BYabscience technology Co.,Ltd



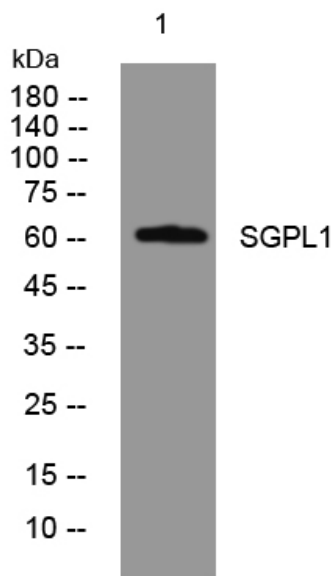
matters needing attention

Avoid repeated freezing and thawing!

Usage suggestions

This product can be used in immunological reaction related experiments. For more information, please consult technical personnel.

Products Images



Western blot analysis of lysates from KB cells, primary antibody was diluted at 1:1000, 4° over night