



# S13A5 rabbit pAb

<b>Catalog No</b>	BYab-08043
<b>Isotype</b>	IgG
<b>Reactivity</b>	Human; Mouse;Rat
<b>Applications</b>	WB
<b>Gene Name</b>	SLC13A5 NACT
<b>Protein Name</b>	S13A5
<b>Immunogen</b>	Synthesized peptide derived from human S13A5 AA range: 313-363
<b>Specificity</b>	This antibody detects endogenous levels of S13A5 at Human/Mouse/Rat
<b>Formulation</b>	Liquid in PBS containing 50% glycerol, 0.5% BSA and 0.157% sodium azide.
<b>Source</b>	Polyclonal, Rabbit,IgG
<b>Purification</b>	The antibody was affinity-purified from rabbit serum by affinity-chromatography using specific immunogen.
<b>Dilution</b>	WB 1:500-2000
<b>Concentration</b>	1 mg/ml
<b>Purity</b>	≥90%
<b>Storage Stability</b>	-20°C/1 year
<b>Synonyms</b>	Solute carrier family 13 member 5 (Na <sup>+</sup> )/citrate cotransporter) (NaCT) (Sodium-coupled citrate transporter) (Sodium-dependent citrate transporter)
<b>Observed Band</b>	60kD
<b>Cell Pathway</b>	Cell membrane ; Multi-pass membrane protein .
<b>Tissue Specificity</b>	Expressed most predominantly in the liver, with moderate expression detectable in the brain and testis.
<b>Function</b>	function:High-affinity sodium/citrate cotransporter that mediates citrate entry into cells. The transport process is electrogenic; it is the trivalent form of citrate rather than the divalent form that is recognized as a substrate. May facilitate the utilization of circulating citrate for the generation of metabolic energy and for the synthesis of fatty acids and cholesterol.,similarity:Belongs to the SLC13A transporter (TC 2.A.47) family. NADC subfamily.,tissue specificity:Expressed most predominantly in the liver, with moderate expression detectable in the brain and testis.,
<b>Background</b>	This gene encodes a protein belonging to the solute carrier family 13 group of proteins. This family member is a sodium-dependent citrate cotransporter that

Nanjing BYabscience technology Co.,Ltd



may regulate metabolic processes. Mutations in this gene cause early infantile epileptic encephalopathy 25. Alternative splicing results in multiple transcript variants. [provided by RefSeq, Aug 2014],

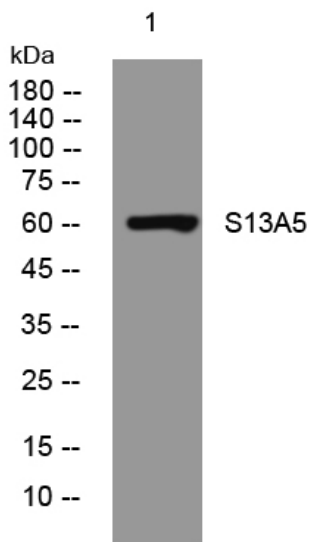
**matters needing attention**

Avoid repeated freezing and thawing!

**Usage suggestions**

This product can be used in immunological reaction related experiments. For more information, please consult technical personnel.

**Products Images**



Western blot analysis of lysates from K562 cells, primary antibody was diluted at 1:1000, 4° over night