



# TAPT1 rabbit pAb

<b>Catalog No</b>	BYab-08035
<b>Isotype</b>	IgG
<b>Reactivity</b>	Human; Mouse
<b>Applications</b>	WB
<b>Gene Name</b>	TAPT1 CMVFR
<b>Protein Name</b>	TAPT1
<b>Immunogen</b>	Synthesized peptide derived from human TAPT1 AA range: 295-345
<b>Specificity</b>	This antibody detects endogenous levels of TAPT1 at Human/Mouse
<b>Formulation</b>	Liquid in PBS containing 50% glycerol, 0.5% BSA and 0.149% sodium azide.
<b>Source</b>	Polyclonal, Rabbit,IgG
<b>Purification</b>	The antibody was affinity-purified from rabbit serum by affinity-chromatography using specific immunogen.
<b>Dilution</b>	WB 1:500-2000
<b>Concentration</b>	1 mg/ml
<b>Purity</b>	≥90%
<b>Storage Stability</b>	-20°C/1 year
<b>Synonyms</b>	Transmembrane anterior posterior transformation protein 1 homolog (Cytomegalovirus partial fusion receptor)
<b>Observed Band</b>	60kD
<b>Cell Pathway</b>	Cytoplasm, cytoskeleton, microtubule organizing center, centrosome . Cytoplasm, cytoskeleton, cilium basal body . Membrane ; Multi-pass membrane protein .
<b>Tissue Specificity</b>	Embryo,Lung,Testis,
<b>Function</b>	function:May act as a downstream effector of HOXC8 possibly by transducing or transmitting extracellular information required for axial skeletal patterning during development (By similarity). In case of infection, may act as a fusion receptor for cytomegalovirus (HCMV) strain AD169.,similarity:Belongs to the TAPT1 family.,
<b>Background</b>	This gene encodes a highly conserved, putative transmembrane protein. A mutation in the mouse ortholog of this gene results in homeotic, posterior-to-anterior transformations of the axial skeleton which are similar to the phenotype of mouse homeobox C8 gene mutants. This gene is proposed to function downstream of homeobox C8 to transduce extracellular patterning information during axial skeleton development. An alternatively spliced transcript

Nanjing BYabscience technology Co.,Ltd



variant encoding a substantially different isoform has been described, but its biological validity has not been determined. [provided by RefSeq, Jul 2008],

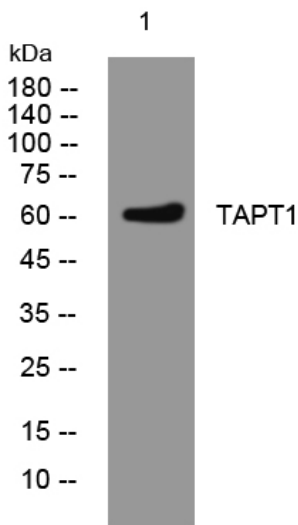
**matters needing attention**

Avoid repeated freezing and thawing!

**Usage suggestions**

This product can be used in immunological reaction related experiments. For more information, please consult technical personnel.

## Products Images



Western blot analysis of lysates from MCF-7 cells, primary antibody was diluted at 1:1000, 4° over night