



REPI1 rabbit pAb

Catalog No	BYab-08034
Isotype	IgG
Reactivity	Human; Mouse;Rat
Applications	WB
Gene Name	REPIN1 RIP60 ZNF464
Protein Name	REPI1
Immunogen	Synthesized peptide derived from human REPI1 AA range: 10-60
Specificity	This antibody detects endogenous levels of REPI1 at Human/Mouse/Rat
Formulation	Liquid in PBS containing 50% glycerol, 0.5% BSA and 0.148% sodium azide.
Source	Polyclonal, Rabbit,IgG
Purification	The antibody was affinity-purified from rabbit serum by affinity-chromatography using specific immunogen.
Dilution	WB 1:500-2000
Concentration	1 mg/ml
Purity	≥90%
Storage Stability	-20°C/1 year
Synonyms	Replication initiator 1 (60 kDa origin-specific DNA-binding protein) (60 kDa replication initiation region protein) (ATT-binding protein) (DHFR oribeta-binding protein RIP60) (Zinc finger protein 464)
Observed Band	60kD
Cell Pathway	Nucleus .
Tissue Specificity	Cervix carcinoma, Eye, Muscle,
Function	function:Sequence-specific double-stranded DNA-binding protein required for initiation of chromosomal DNA replication. Binds on 5'-ATT-3' reiterated sequences downstream of the origin of bidirectional replication (OBR) and a second, homologous ATT sequence of opposite orientation situated within the OBR zone. Facilitates DNA bending.,similarity:Contains 15 C2H2-type zinc fingers.,subunit:Homodimers and homomultimers. Found in a complex with RIP60 and RIP100.,

Background

Nanjing BYabscience technology Co.,Ltd



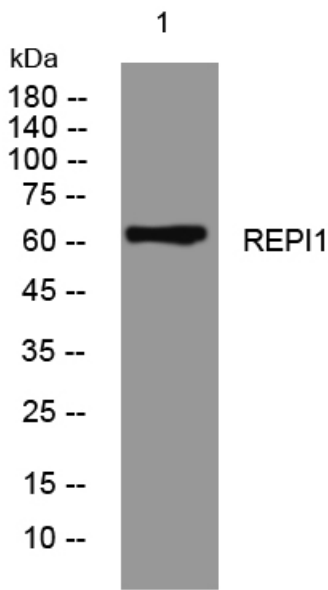
matters needing attention

Avoid repeated freezing and thawing!

Usage suggestions

This product can be used in immunological reaction related experiments. For more information, please consult technical personnel.

Products Images



Western blot analysis of lysates from KB cells, primary antibody was diluted at 1:1000, 4° over night