



# PGTA rabbit pAb

<b>Catalog No</b>	BYab-08032
<b>Isotype</b>	IgG
<b>Reactivity</b>	Human; Mouse;Rat
<b>Applications</b>	WB
<b>Gene Name</b>	RABGGTA
<b>Protein Name</b>	PGTA
<b>Immunogen</b>	Synthesized peptide derived from human PGTA AA range: 312-362
<b>Specificity</b>	This antibody detects endogenous levels of PGTA at Human/Mouse/Rat
<b>Formulation</b>	Liquid in PBS containing 50% glycerol, 0.5% BSA and 0.146% sodium azide.
<b>Source</b>	Polyclonal, Rabbit,IgG
<b>Purification</b>	The antibody was affinity-purified from rabbit serum by affinity-chromatography using specific immunogen.
<b>Dilution</b>	WB 1:500-2000
<b>Concentration</b>	1 mg/ml
<b>Purity</b>	≥90%
<b>Storage Stability</b>	-20°C/1 year
<b>Synonyms</b>	Geranylgeranyl transferase type-2 subunit alpha (EC 2.5.1.60) (Geranylgeranyl transferase type II subunit alpha) (Rab geranyl-geranyltransferase subunit alpha) (Rab GG transferase alpha) (Rab GGase alpha) (Rab geranylgeranyltransferase subunit alpha)
<b>Observed Band</b>	60kD
<b>Cell Pathway</b>	plasma membrane,Rab-protein geranylgeranyltransferase complex,
<b>Tissue Specificity</b>	Fetal brain,Lung,Thymus,Tongue,
<b>Function</b>	catalytic activity:Geranylgeranyl diphosphate + protein-cysteine = S-geranylgeranyl-protein + diphosphate.,cofactor:binds 1 zinc ion per dimer.,enzyme regulation:The enzymatic reaction requires the aid of a Rab escort protein (also called component A).,function:Catalyzes the transfer of a geranyl-geranyl moiety from geranyl-geranyl pyrophosphate to both cysteines in Rab proteins with an -XXCC, -XCXC and -CCXX C-terminal, such as RAB1A, RAB3A and RAB5A respectively.,similarity:Belongs to the protein prenyltransferase subunit alpha family.,similarity:Contains 6 PFTA

Nanjing BYabscience technology Co.,Ltd



repeats.,subunit:Heterodimer of an alpha and a beta subunit, collectively called component B.,

### Background

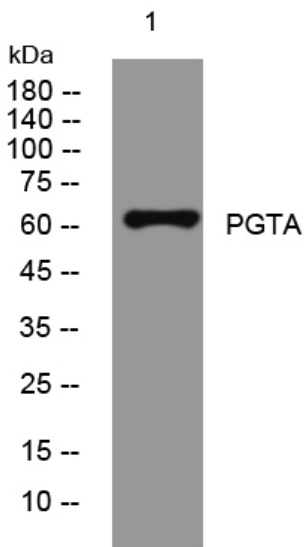
### matters needing attention

Avoid repeated freezing and thawing!

### Usage suggestions

This product can be used in immunological reaction related experiments. For more information, please consult technical personnel.

## Products Images



Western blot analysis of lysates from SW480 cells, primary antibody was diluted at 1:1000, 4° over night