



# LCTL rabbit pAb

<b>Catalog No</b>	BYab-08029
<b>Isotype</b>	IgG
<b>Reactivity</b>	Human; Mouse
<b>Applications</b>	WB
<b>Gene Name</b>	LCTL KLPH UNQ3022/PRO9820
<b>Protein Name</b>	LCTL
<b>Immunogen</b>	Synthesized peptide derived from human LCTL AA range: 450-500
<b>Specificity</b>	This antibody detects endogenous levels of LCTL at Human/Mouse
<b>Formulation</b>	Liquid in PBS containing 50% glycerol, 0.5% BSA and 0.143% sodium azide.
<b>Source</b>	Polyclonal, Rabbit,IgG
<b>Purification</b>	The antibody was affinity-purified from rabbit serum by affinity-chromatography using specific immunogen.
<b>Dilution</b>	WB 1:500-2000
<b>Concentration</b>	1 mg/ml
<b>Purity</b>	≥90%
<b>Storage Stability</b>	-20°C/1 year
<b>Synonyms</b>	Lactase-like protein (Klotho/lactase-phlorizin hydrolase-related protein)
<b>Observed Band</b>	60kD
<b>Cell Pathway</b>	Endoplasmic reticulum membrane ; Single-pass membrane protein .
<b>Tissue Specificity</b>	
<b>Function</b>	caution:Probably inactive as a glycosidase since it lacks the essential active site Glu at position 201.,similarity:Belongs to the glycosyl hydrolase 1 family.,similarity:Belongs to the glycosyl hydrolase 1 family. Klotho subfamily.,
<b>Background</b>	This gene encodes a member of family 1 glycosidases. Glycosidases are enzymes that hydrolyze glycosidic bonds and are classified into families based on primary amino acid sequence. Most members of family 1 have two conserved glutamic acid residues, which are required for enzymatic activity. The mouse ortholog of this protein has been characterized and has a domain structure of an N-terminal signal peptide, glycosidase domain, transmembrane domain, and a short cytoplasmic tail. It lacks one of the conserved glutamic acid residues important for catalysis, and its function remains to be determined (PMID:

Nanjing BYabscience technology Co.,Ltd



12084582). Alternative splicing results in multiple transcript variants. [provided by RefSeq, Jun 2013],

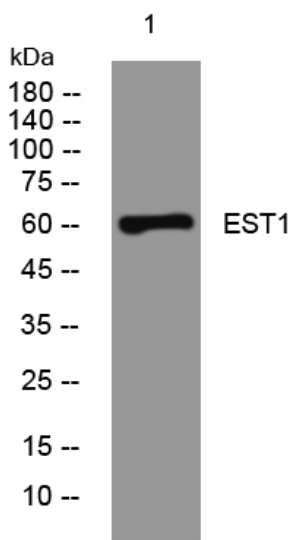
**matters needing attention**

Avoid repeated freezing and thawing!

**Usage suggestions**

This product can be used in immunological reaction related experiments. For more information, please consult technical personnel.

## Products Images



Western blot analysis of lysates from MCF-7 cells, primary antibody was diluted at 1:1000, 4°over night