



FBXW5 rabbit pAb

Catalog No	BYab-08018
Isotype	IgG
Reactivity	Human; Mouse;Rat
Applications	WB
Gene Name	FBXW5 FBW5 PP3971
Protein Name	FBXW5
Immunogen	Synthesized peptide derived from human FBXW5 AA range: 319-369
Specificity	This antibody detects endogenous levels of FBXW5 at Human/Mouse/Rat
Formulation	Liquid in PBS containing 50% glycerol, 0.5% BSA and 0.132% sodium azide.
Source	Polyclonal, Rabbit,IgG
Purification	The antibody was affinity-purified from rabbit serum by affinity-chromatography using specific immunogen.
Dilution	WB 1:500-2000
Concentration	1 mg/ml
Purity	≥90%
Storage Stability	-20°C/1 year
Synonyms	F-box/WD repeat-containing protein 5 (F-box and WD-40 domain-containing protein 5)
Observed Band	60kD
Cell Pathway	Cytoplasm .
Tissue Specificity	Brain,Cervix,Colon,Ovary,Placenta,Skin,Testis,
Function	function:Substrate-recognition component of the SCF (SKP1-CUL1-F-box protein)-type E3 ubiquitin ligase complex.,similarity:Contains 1 F-box domain.,similarity:Contains 3 WD repeats.,subunit:Interacts with SKP1A and CUL1.,
Background	This gene encodes a member of the F-box protein family, members of which are characterized by an approximately 40 amino acid motif, the F-box. The F-box proteins constitute one of the four subunits of ubiquitin protein ligase complex called SCFs (SKP1-cullin-F-box), which function in phosphorylation-dependent ubiquitination. The F-box proteins are divided into three classes: Fbws containing WD-40 domains, Fbls containing leucine-rich repeats, and Fbxs containing either

Nanjing BYabscience technology Co.,Ltd



different protein-protein interaction modules or no recognizable motifs. The protein encoded by this gene contains WD-40 domains, in addition to an F-box motif, so it belongs to the Fbw class. Alternatively spliced transcript variants encoding distinct isoforms have been identified for this gene, however, they were found to be nonsense-mediated mRNA decay (NMD) candidates, hence not represented. [provided by RefSeq, Jul 2008],

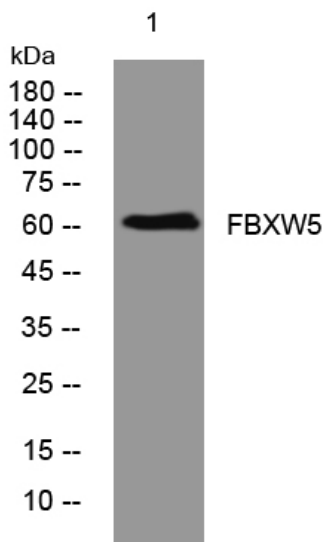
matters needing attention

Avoid repeated freezing and thawing!

Usage suggestions

This product can be used in immunological reaction related experiments. For more information, please consult technical personnel.

Products Images



Western blot analysis of lysates from DU145 cells, primary antibody was diluted at 1:1000, 4° over night