



DONS rabbit pAb

Catalog No	BYab-08017
Isotype	IgG
Reactivity	Human; Mouse
Applications	WB
Gene Name	DONSON C21orf60
Protein Name	DONS
Immunogen	Synthesized peptide derived from human DONS AA range: 155-205
Specificity	This antibody detects endogenous levels of DONS at Human/Mouse
Formulation	Liquid in PBS containing 50% glycerol, 0.5% BSA and 0.131% sodium azide.
Source	Polyclonal, Rabbit,IgG
Purification	The antibody was affinity-purified from rabbit serum by affinity-chromatography using specific immunogen.
Dilution	WB 1:500-2000
Concentration	1 mg/ml
Purity	≥90%
Storage Stability	-20°C/1 year
Synonyms	Protein downstream neighbor of Son (B17)
Observed Band	60kD
Cell Pathway	Nucleus . Localizes at DNA replication sites. .
Tissue Specificity	Expressed in the brain, with higher levels in prenatal compared to adult brain.
Function	alternative products:Experimental confirmation may be lacking for some isoforms,function:Essential for DNA amplification in the ovary and required for cell proliferation during development.,similarity:Belongs to the DONSON family.,
Background	This gene lies downstream of the SON gene and spans 10 kb on chromosome 21. The function of this gene is unknown. [provided by RefSeq, Jul 2008],
matters needing attention	Avoid repeated freezing and thawing!

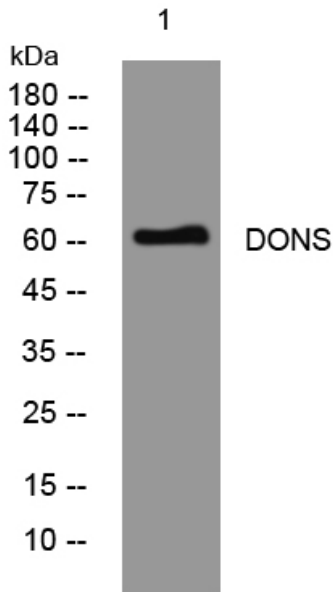
Nanjing BYabscience technology Co.,Ltd



Usage suggestions

This product can be used in immunological reaction related experiments. For more information, please consult technical personnel.

Products Images



Western blot analysis of lysates from HeLa cells, primary antibody was diluted at 1:1000, 4° over night