



NPNT rabbit pAb

Catalog No	BYab-08012
Isotype	IgG
Reactivity	Human; Mouse
Applications	WB
Gene Name	NPNT EGFL6L POEM UNQ295/PRO334
Protein Name	NPNT
Immunogen	Synthesized peptide derived from human NPNT AA range: 485-535
Specificity	This antibody detects endogenous levels of NPNT at Human/Mouse
Formulation	Liquid in PBS containing 50% glycerol, 0.5% BSA and 0.126% sodium azide.
Source	Polyclonal, Rabbit,IgG
Purification	The antibody was affinity-purified from rabbit serum by affinity-chromatography using specific immunogen.
Dilution	WB 1:500-2000
Concentration	1 mg/ml
Purity	≥90%
Storage Stability	-20°C/1 year
Synonyms	Nephronectin (Preosteoblast EGF-like repeat protein with MAM domain) (Protein EGFL6-like)
Observed Band	60kD
Cell Pathway	Secreted, extracellular space, extracellular matrix . Trapped on the cell surface or in the extracellular matrix. .
Tissue Specificity	Expressed in kidney and lung and to a lower extent in brain, pregnant uterus, placenta, thyroid gland and blood vessels.
Function	developmental stage:Expressed in fetal kidney, cochlea, eye, heart and lung.,domain:The MAM domain is required for localization at the cell surface.,function:Functional ligand of integrin alpha-8/beta-1 in kidney development. Regulates the expression of GDNF with integrin alpha-8/beta-1 which is essential for kidney development. May also play a role in the development and function of various tissues, regulating cell adhesion, spreading and survival through the binding of several integrins.,similarity:Belongs to the nephronectin family.,similarity:Contains 1 MAM domain.,similarity:Contains 5 EGF-like domains.,subcellular location:Trapped on the cell surface or in the extracellular matrix.,subunit:Homodimer and homotrimer.,tissue specificity:Expressed in kidney and lung and to a lower extent in brain, pregnant

Nanjing BYabscience technology Co.,Ltd



uterus, placenta, thyroid gland and blood vessels.,

Background

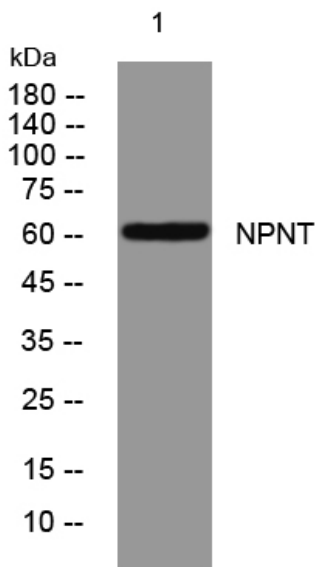
matters needing attention

Avoid repeated freezing and thawing!

Usage suggestions

This product can be used in immunological reaction related experiments. For more information, please consult technical personnel.

Products Images



Western blot analysis of lysates from HpeG2 cells, primary antibody was diluted at 1:1000, 4° over night