



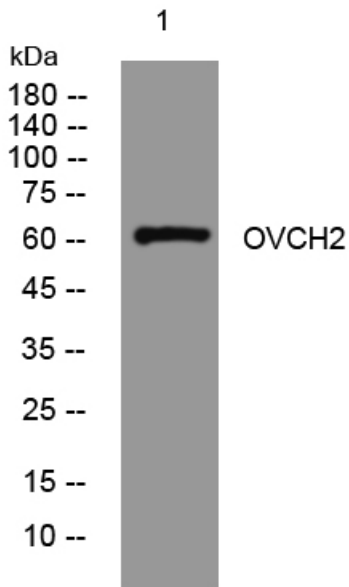
OVCH2 rabbit pAb

Catalog No	BYab-08006
Isotype	IgG
Reactivity	Human; Mouse
Applications	WB
Gene Name	OVCH2 OVTN
Protein Name	OVCH2
Immunogen	Synthesized peptide derived from human OVCH2 AA range: 506-556
Specificity	This antibody detects endogenous levels of OVCH2 at Human/Mouse
Formulation	Liquid in PBS containing 50% glycerol, 0.5% BSA and 0.120% sodium azide.
Source	Polyclonal, Rabbit,IgG
Purification	The antibody was affinity-purified from rabbit serum by affinity-chromatography using specific immunogen.
Dilution	WB 1:500-2000
Concentration	1 mg/ml
Purity	≥90%
Storage Stability	-20°C/1 year
Synonyms	Ovochymase-2 (EC 3.4.21.-) (Oviductin)
Observed Band	60kD
Cell Pathway	Secreted .
Tissue Specificity	
Function	similarity:Belongs to the peptidase S1 family.,similarity:Contains 1 peptidase S1 domain.,similarity:Contains 2 CUB domains.,
Background	
matters needing attention	Avoid repeated freezing and thawing!
Usage suggestions	This product can be used in immunological reaction related experiments. For more information, please consult technical personnel.

Nanjing BYabscience technology Co.,Ltd



Products Images



Western blot analysis of lysates from MDA-MB cells,
primary antibody was diluted at 1:1000, 4° over night