



# EAA4 rabbit pAb

<b>Catalog No</b>	BYab-08004
<b>Isotype</b>	IgG
<b>Reactivity</b>	Human; Mouse;Rat
<b>Applications</b>	WB
<b>Gene Name</b>	SLC1A6 EAAT4
<b>Protein Name</b>	EAA4
<b>Immunogen</b>	Synthesized peptide derived from human EAA4 AA range: 320-370
<b>Specificity</b>	This antibody detects endogenous levels of EAA4 at Human/Mouse/Rat
<b>Formulation</b>	Liquid in PBS containing 50% glycerol, 0.5% BSA and 0.118% sodium azide.
<b>Source</b>	Polyclonal, Rabbit,IgG
<b>Purification</b>	The antibody was affinity-purified from rabbit serum by affinity-chromatography using specific immunogen.
<b>Dilution</b>	WB 1:500-2000
<b>Concentration</b>	1 mg/ml
<b>Purity</b>	≥90%
<b>Storage Stability</b>	-20°C/1 year
<b>Synonyms</b>	Excitatory amino acid transporter 4 (Sodium-dependent glutamate/aspartate transporter) (Solute carrier family 1 member 6)
<b>Observed Band</b>	60kD
<b>Cell Pathway</b>	Cell membrane ; Multi-pass membrane protein .
<b>Tissue Specificity</b>	Brain. Expressed densely and selectively in cell bodies of Purkinje cells.
<b>Function</b>	function:Transports L-glutamate and also L- and D-aspartate. Seems to act as a symport by cotransporting sodium.,similarity:Belongs to the sodium:dicarboxylate (SDF) symporter (TC 2.A.23) family.,tissue specificity:Brain. Expressed densely and selectively in cell bodies of Purkinje cells.,
<b>Background</b>	
<b>matters needing attention</b>	Avoid repeated freezing and thawing!

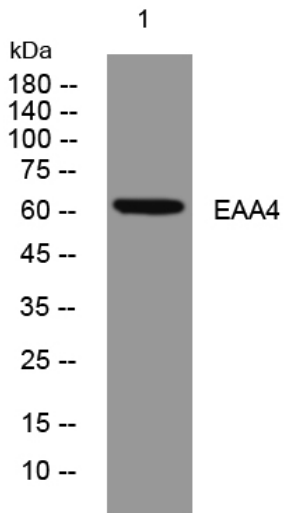
Nanjing BYabscience technology Co.,Ltd



### Usage suggestions

This product can be used in immunological reaction related experiments. For more information, please consult technical personnel.

## Products Images



Western blot analysis of lysates from THP-1 cells, primary antibody was diluted at 1:1000, 4° over night