



DPYL5 rabbit pAb

Catalog No	BYab-08003
Isotype	IgG
Reactivity	Human; Mouse;Rat
Applications	WB
Gene Name	DPYSL5 CRMP5 ULIP6
Protein Name	DPYL5
Immunogen	Synthesized peptide derived from human DPYL5 AA range: 396-446
Specificity	This antibody detects endogenous levels of DPYL5 at Human/Mouse/Rat
Formulation	Liquid in PBS containing 50% glycerol, 0.5% BSA and 0.117% sodium azide.
Source	Polyclonal, Rabbit,IgG
Purification	The antibody was affinity-purified from rabbit serum by affinity-chromatography using specific immunogen.
Dilution	WB 1:500-2000
Concentration	1 mg/ml
Purity	≥90%
Storage Stability	-20°C/1 year
Synonyms	Dihydropyrimidinase-related protein 5 (DRP-5) (CRMP3-associated molecule) (CRAM) (Collapsin response mediator protein 5) (CRMP-5) (UNC33-like phosphoprotein 6) (ULIP-6)
Observed Band	60kD
Cell Pathway	Cytoplasm .
Tissue Specificity	Amygdala,Brain,Cajal-Retzius cell,Fetal brain cortex,Lung,Spinal cord,
Function	function:May have a function in neuronal differentiation and/or axon growth.,similarity:Belongs to the DHOase family. Hydantoinase/dihydropyrimidinase subfamily.,subunit:Homotetramer, and heterotetramer with other DPYS-like proteins. Interacts with DPYSL2, DPYSL3 and DPYSL4.,
Background	This gene encodes a member of the CRMP (collapsing response mediator protein) family thought to be involved in neural development. Antibodies to the encoded protein were found in some patients with neurologic symptoms who had paraneoplastic syndrome. A pseudogene of this gene is found on chromosome

Nanjing BYabscience technology Co.,Ltd



11. Multiple alternatively spliced variants, encoding the same protein, have been identified. [provided by RefSeq, Dec 2011],

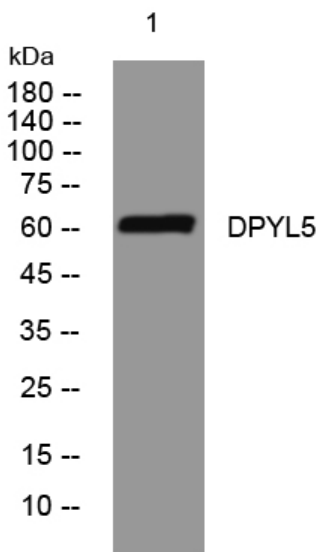
matters needing attention

Avoid repeated freezing and thawing!

Usage suggestions

This product can be used in immunological reaction related experiments. For more information, please consult technical personnel.

Products Images



Western blot analysis of lysates from HeLa cells, primary antibody was diluted at 1:1000, 4° over night