



CTBL1 rabbit pAb

Catalog No	BYab-07993
Isotype	IgG
Reactivity	Human; Mouse;Rat
Applications	WB
Gene Name	CTNNBL1 C20orf33 PP8304
Protein Name	CTBL1
Immunogen	Synthesized peptide derived from human CTBL1 AA range: 293-343
Specificity	This antibody detects endogenous levels of CTBL1 at Human/Mouse/Rat
Formulation	Liquid in PBS containing 50% glycerol, 0.5% BSA and 0.107% sodium azide.
Source	Polyclonal, Rabbit,IgG
Purification	The antibody was affinity-purified from rabbit serum by affinity-chromatography using specific immunogen.
Dilution	WB 1:500-2000
Concentration	1 mg/ml
Purity	≥90%
Storage Stability	-20°C/1 year
Synonyms	Beta-catenin-like protein 1 (Nuclear-associated protein) (NAP) (Testis development protein NYD-SP19)
Observed Band	60kD
Cell Pathway	[Isoform 1]: Nucleus.; [Isoform 2]: Cytoplasm .
Tissue Specificity	Widely expressed with highest levels in skeletal muscle, placenta, heart, spleen, testis and thyroid.
Function	function:Induces apoptosis in CHO cells.,tissue specificity:Widely expressed with highest levels in skeletal muscle, placenta, heart, spleen, testis and thyroid.,
Background	The protein encoded by this gene is a component of the pre-mRNA-processing factor 19-cell division cycle 5-like (PRP19-CDC5L) protein complex, which activates pre-mRNA splicing and is an integral part of the spliceosome. The encoded protein is also a nuclear localization sequence binding protein, and binds to activation-induced deaminase and is important for antibody diversification. This gene may also be associated with the development of obesity. Alternative splicing results in multiple transcript variants. A pseudogene of this gene has been defined on the X chromosome. [provided by RefSeq, Jul 2013],

Nanjing BYabscience technology Co.,Ltd



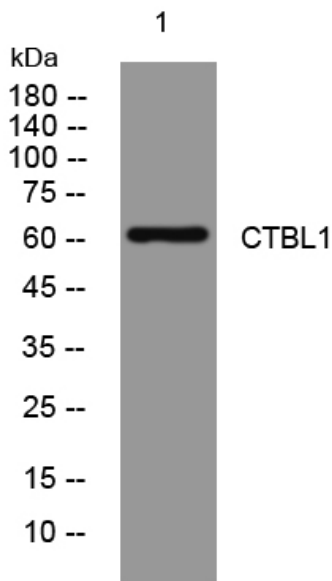
matters needing attention

Avoid repeated freezing and thawing!

Usage suggestions

This product can be used in immunological reaction related experiments. For more information, please consult technical personnel.

Products Images



Western blot analysis of lysates from HEK293 cells, primary antibody was diluted at 1:1000, 4° over night