



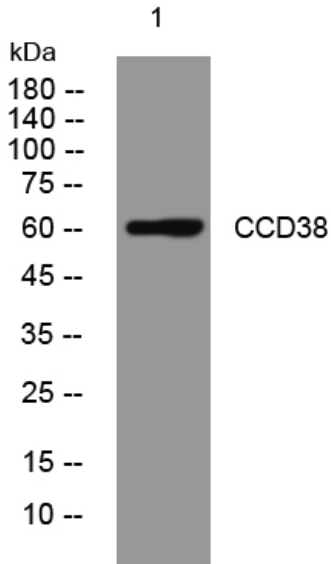
CCD38 rabbit pAb

Catalog No	BYab-07990
Isotype	IgG
Reactivity	Human; Mouse
Applications	WB
Gene Name	CCDC38
Protein Name	CCD38
Immunogen	Synthesized peptide derived from human CCD38 AA range: 362-412
Specificity	This antibody detects endogenous levels of CCD38 at Human/Mouse
Formulation	Liquid in PBS containing 50% glycerol, 0.5% BSA and 0.104% sodium azide.
Source	Polyclonal, Rabbit,IgG
Purification	The antibody was affinity-purified from rabbit serum by affinity-chromatography using specific immunogen.
Dilution	WB 1:500-2000
Concentration	1 mg/ml
Purity	≥90%
Storage Stability	-20°C/1 year
Synonyms	Coiled-coil domain-containing protein 38
Observed Band	60kD
Cell Pathway	Cytoplasm, cytoskeleton, microtubule organizing center, centrosome .
Tissue Specificity	Testis,
Function	
Background	
matters needing attention	Avoid repeated freezing and thawing!
Usage suggestions	This product can be used in immunological reaction related experiments. For more information, please consult technical personnel.

Nanjing BYabscience technology Co.,Ltd



Products Images



Western blot analysis of lysates from SW480 cells,
primary antibody was diluted at 1:1000, 4° over night