



SPTC2 rabbit pAb

Catalog No	BYab-07986
Isotype	IgG
Reactivity	Human; Mouse
Applications	WB
Gene Name	SPTLC2 KIAA0526 LCB2
Protein Name	SPTC2
Immunogen	Synthesized peptide derived from human SPTC2 AA range: 273-323
Specificity	This antibody detects endogenous levels of SPTC2 at Human/Mouse
Formulation	Liquid in PBS containing 50% glycerol, 0.5% BSA and 0.100% sodium azide.
Source	Polyclonal, Rabbit,IgG
Purification	The antibody was affinity-purified from rabbit serum by affinity-chromatography using specific immunogen.
Dilution	WB 1:500-2000
Concentration	1 mg/ml
Purity	≥90%
Storage Stability	-20°C/1 year
Synonyms	Serine palmitoyltransferase 2 (EC 2.3.1.50) (Long chain base biosynthesis protein 2) (LCB 2) (Long chain base biosynthesis protein 2a) (LCB2a) (Serine-palmitoyl-CoA transferase 2) (SPT 2)
Observed Band	60kD
Cell Pathway	Endoplasmic reticulum membrane ; Single-pass membrane protein .
Tissue Specificity	Widely expressed.
Function	catalytic activity:Palmitoyl-CoA + L-serine = CoA + 3-dehydro-D-sphinganine + CO(2).,cofactor:Pyridoxal phosphate.,pathway:Lipid metabolism; sphingolipid metabolism.,similarity:Belongs to the class-II pyridoxal-phosphate-dependent aminotransferase family.,subunit:SPTLC1, SPTLC2 and SPTLC3 may encode subunits of the enzyme.,tissue specificity:Widely expressed.,
Background	This gene encodes a long chain base subunit of serine palmitoyltransferase. Serine palmitoyltransferase, which consists of two different subunits, is the key enzyme in sphingolipid biosynthesis. It catalyzes the pyridoxal-5-prime-phosphate-dependent condensation of L-serine and

Nanjing BYabscience technology Co.,Ltd



palmitoyl-CoA to 3-oxosphinganine. Mutations in this gene were identified in patients with hereditary sensory neuropathy type I. [provided by RefSeq, Mar 2011],

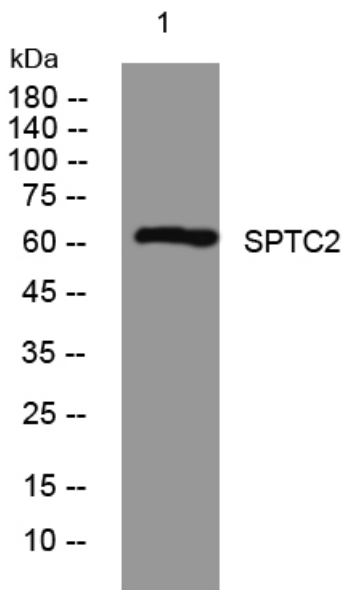
matters needing attention

Avoid repeated freezing and thawing!

Usage suggestions

This product can be used in immunological reaction related experiments. For more information, please consult technical personnel.

Products Images



Western blot analysis of lysates from SH-SY5Y cells, primary antibody was diluted at 1:1000, 4° over night