



PI51A rabbit pAb

Catalog No	BYab-07985
Isotype	IgG
Reactivity	Human; Mouse
Applications	WB
Gene Name	PIP5K1A
Protein Name	PI51A
Immunogen	Synthesized peptide derived from human PI51A AA range: 270-320
Specificity	This antibody detects endogenous levels of PI51A at Human/Mouse
Formulation	Liquid in PBS containing 50% glycerol, 0.5% BSA and 0.99% sodium azide.
Source	Polyclonal, Rabbit,IgG
Purification	The antibody was affinity-purified from rabbit serum by affinity-chromatography using specific immunogen.
Dilution	WB 1:500-2000
Concentration	1 mg/ml
Purity	≥90%
Storage Stability	-20°C/1 year
Synonyms	Phosphatidylinositol 4-phosphate 5-kinase type-1 alpha (PIP5K1-alpha) (PtdIns(4)P-5-kinase 1 alpha) (EC 2.7.1.68) (68 kDa type I phosphatidylinositol 4-phosphate 5-kinase alpha) (Phosphatidylinositol 4-phosphate 5-kinase type I alpha) (PIP5KIalpha)
Observed Band	60kD
Cell Pathway	Cell membrane . Cytoplasm . Nucleus . Nucleus speckle . Cell projection, ruffle . Cell projection, lamellipodium . Colocalizes with RAC1 at actin-rich membrane ruffles (PubMed:20660631). Localizes to nuclear speckles and associates with TUT1 to regulate polyadenylation of selected mRNAs (PubMed:18288197). .
Tissue Specificity	Highly expressed in heart, placenta, skeletal muscle, kidney and pancreas. Detected at lower levels in brain, lung and liver.
Function	catalytic activity:ATP + 1-phosphatidyl-1D-myo-inositol 4-phosphate = ADP + 1-phosphatidyl-1D-myo-inositol 4,5-bisphosphate.,function:Participates in the biosynthesis of phosphatidylinositol-4,5-bisphosphate. Mediates RAC1-dependent reorganization of actin filaments. Contributes to the activation of PLD2.,similarity:Contains 1 PI5K domain.,subcellular location:Associated with the plasma membrane and with internal membranes. Associated with Golgi stacks

Nanjing BYabscience technology Co.,Ltd



(By similarity). Detected on RAC1-induced plasma membrane ruffles, and on membrane ruffles induced by platelet-derived growth factor.,subunit:Interacts with ARF1, RAC1, PLD1, PLD2 and JUB.,tissue specificity:Highly expressed in heart, placenta, skeletal muscle, kidney and pancreas. Detected at lower levels in brain, lung and liver.,

Background

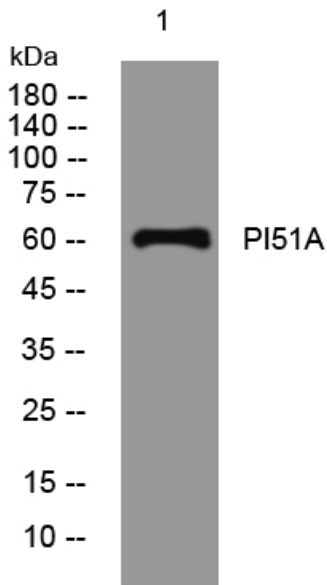
matters needing attention

Avoid repeated freezing and thawing!

Usage suggestions

This product can be used in immunological reaction related experiments. For more information, please consult technical personnel.

Products Images



Western blot analysis of lysates from AD293 cells, primary antibody was diluted at 1:1000, 4° over night