



EST4A rabbit pAb

Catalog No	BYab-07973
Isotype	IgG
Reactivity	Human; Mouse
Applications	WB
Gene Name	CES4A CES8 UNQ440/PRO873
Protein Name	EST4A
Immunogen	Synthesized peptide derived from human EST4A AA range: 441-491
Specificity	This antibody detects endogenous levels of EST4A at Human/Mouse
Formulation	Liquid in PBS containing 50% glycerol, 0.5% BSA and 0.87% sodium azide.
Source	Polyclonal, Rabbit,IgG
Purification	The antibody was affinity-purified from rabbit serum by affinity-chromatography using specific immunogen.
Dilution	WB 1:500-2000
Concentration	1 mg/ml
Purity	≥90%
Storage Stability	-20°C/1 year
Synonyms	Carboxylesterase 4A (EC 3.1.1.-)
Observed Band	60kD
Cell Pathway	Secreted .
Tissue Specificity	Blood,Brain,Uterus,
Function	function:Probable carboxylesterase.,similarity:Belongs to the type-B carboxylesterase/lipase family.,
Background	This gene encodes a member of the carboxylesterase large family. The family members are responsible for the hydrolysis or transesterification of various xenobiotics, such as cocaine and heroin, and endogenous substrates with ester, thioester, or amide bonds. They also participate in fatty acyl and cholesterol ester metabolism, and may play a role in the blood-brain barrier system. This gene, also called CES6, encodes a secreted enzyme, and may play a role in the detoxification of drugs and xenobiotics in neural and other tissues of the body and in the cerebrospinal fluid. Multiple transcript variants encoding different isoforms have been reported, but the full-length nature and/or biological validity of some

Nanjing BYabscience technology Co.,Ltd



variants have not been determined. [provided by RefSeq, Jun 2010],

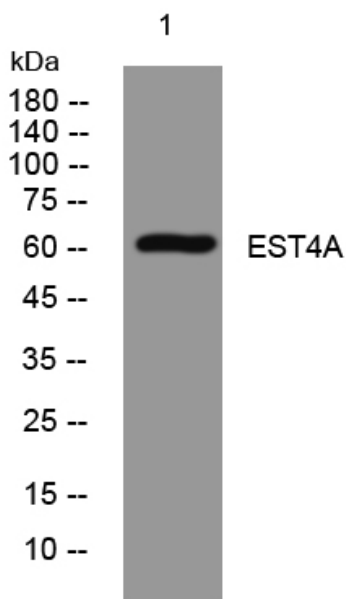
matters needing attention

Avoid repeated freezing and thawing!

Usage suggestions

This product can be used in immunological reaction related experiments. For more information, please consult technical personnel.

Products Images



Western blot analysis of lysates from AD293 cells, primary antibody was diluted at 1:1000, 4° over night