



DMRT2 rabbit pAb

Catalog No	BYab-07971
Isotype	IgG
Reactivity	Human;Rat;Mouse;
Applications	WB
Gene Name	DMRT2 DSXL2
Protein Name	DMRT2
Immunogen	Synthesized peptide derived from human DMRT2 AA range: 315-365
Specificity	This antibody detects endogenous levels of DMRT2 at Human
Formulation	Liquid in PBS containing 50% glycerol, 0.5% BSA and 0.85% sodium azide.
Source	Polyclonal, Rabbit,IgG
Purification	The antibody was affinity-purified from rabbit serum by affinity-chromatography using specific immunogen.
Dilution	WB 1:500-2000
Concentration	1 mg/ml
Purity	≥90%
Storage Stability	-20°C/1 year
Synonyms	Doublesex- and mab-3-related transcription factor 2 (Doublesex-like 2 protein) (DSXL-2)
Observed Band	60kD
Cell Pathway	Nucleus .
Tissue Specificity	Expressed in testis, kidney and skeletal muscle.
Function	similarity:Belongs to the DMRT family.,similarity:Contains 1 DM DNA-binding domain.,tissue specificity:Expressed in testis, kidney and skeletal muscle.,
Background	The protein encoded by this gene belongs to the DMRT gene family, sharing a DM DNA-binding domain with Drosophila 'doublesex' (dsx) and C. elegans mab3, genes involved in sex determination in these organisms. Also, this gene is located in a region of the human genome (chromosome 9p24.3) associated with gonadal dysgenesis and XY sex reversal. Hence this gene is one of the candidates for sex-determining gene(s) on chr 9. [provided by RefSeq, Apr 2010],

Nanjing BYabscience technology Co.,Ltd



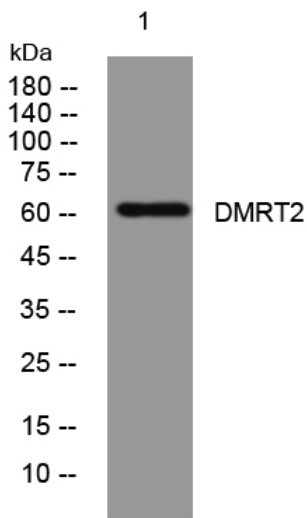
matters needing attention

Avoid repeated freezing and thawing!

Usage suggestions

This product can be used in immunological reaction related experiments. For more information, please consult technical personnel.

Products Images



Western blot analysis of lysates from A431 cells, primary antibody was diluted at 1:1000, 4° over night