



ZN250 rabbit pAb

Catalog No	BYab-07966
Isotype	IgG
Reactivity	Human; Mouse
Applications	WB
Gene Name	ZNF250 ZNF647
Protein Name	ZN250
Immunogen	Synthesized peptide derived from human ZN250 AA range: 38-88
Specificity	This antibody detects endogenous levels of ZN250 at Human/Mouse
Formulation	Liquid in PBS containing 50% glycerol, 0.5% BSA and 0.80% sodium azide.
Source	Polyclonal, Rabbit,IgG
Purification	The antibody was affinity-purified from rabbit serum by affinity-chromatography using specific immunogen.
Dilution	WB 1:500-2000
Concentration	1 mg/ml
Purity	≥90%
Storage Stability	-20°C/1 year
Synonyms	Zinc finger protein 250 (Zinc finger protein 647)
Observed Band	60kD
Cell Pathway	Nucleus .
Tissue Specificity	Brain,Cerebellum,Colon,Skeletal muscle,
Function	function:May be involved in transcriptional regulation.,similarity:Belongs to the krueppel C2H2-type zinc-finger protein family.,similarity:Contains 1 KRAB domain.,similarity:Contains 13 C2H2-type zinc fingers.,
Background	
matters needing attention	Avoid repeated freezing and thawing!

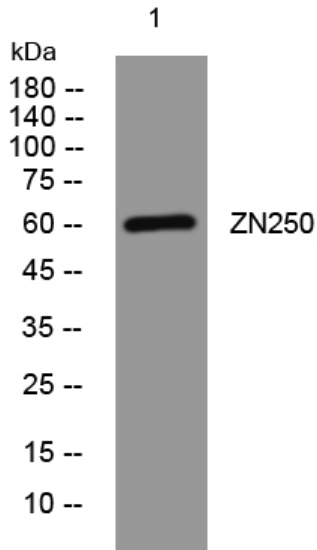
Nanjing BYabscience technology Co.,Ltd



Usage suggestions

This product can be used in immunological reaction related experiments. For more information, please consult technical personnel.

Products Images



Western blot analysis of lysates from KB cells, primary antibody was diluted at 1:1000, 4° over night