



# VGLU1 rabbit pAb

<b>Catalog No</b>	BYab-07965
<b>Isotype</b>	IgG
<b>Reactivity</b>	Human; Mouse;Rat
<b>Applications</b>	WB
<b>Gene Name</b>	SLC17A7 BNPI VGLUT1
<b>Protein Name</b>	VGLU1
<b>Immunogen</b>	Synthesized peptide derived from human VGLU1 AA range: 488-538
<b>Specificity</b>	This antibody detects endogenous levels of VGLU1 at Human/Mouse/Rat
<b>Formulation</b>	Liquid in PBS containing 50% glycerol, 0.5% BSA and 0.79% sodium azide.
<b>Source</b>	Polyclonal, Rabbit,IgG
<b>Purification</b>	The antibody was affinity-purified from rabbit serum by affinity-chromatography using specific immunogen.
<b>Dilution</b>	WB 1:500-2000
<b>Concentration</b>	1 mg/ml
<b>Purity</b>	≥90%
<b>Storage Stability</b>	-20°C/1 year
<b>Synonyms</b>	Vesicular glutamate transporter 1 (VGLUT1) (Brain-specific Na(+)-dependent inorganic phosphate cotransporter) (Solute carrier family 17 member 7)
<b>Observed Band</b>	60kD
<b>Cell Pathway</b>	Cytoplasmic vesicle, secretory vesicle, synaptic vesicle membrane . Membrane ; Multi-pass membrane protein . Cell junction, synapse, synaptosome .
<b>Tissue Specificity</b>	Expressed in several regions of the brain including amygdala, cerebellum, cerebral cortex, hippocampus, frontal lobe, medulla, occipital lobe, putamen and temporal lobe.
<b>Function</b>	function:Mediates the uptake of glutamate into synaptic vesicles at presynaptic nerve terminals of excitatory neural cells. May also mediate the transport of inorganic phosphate.,similarity:Belongs to the major facilitator superfamily. Sodium/anion cotransporter family. VGLUT subfamily.,tissue specificity:Expressed in several regions of the brain including amygdala, cerebellum, cerebral cortex, hippocampus, frontal lobe, medulla, occipital lobe, putamen and temporal lobe.,
<b>Background</b>	The protein encoded by this gene is a vesicle-bound, sodium-dependent phosphate transporter that is specifically expressed in the neuron-rich regions of

Nanjing BYabscience technology Co.,Ltd



the brain. It is preferentially associated with the membranes of synaptic vesicles and functions in glutamate transport. The protein shares 82% identity with the differentiation-associated Na-dependent inorganic phosphate cotransporter and they appear to form a distinct class within the Na<sup>+</sup>/Pi cotransporter family. [provided by RefSeq, Jul 2008],

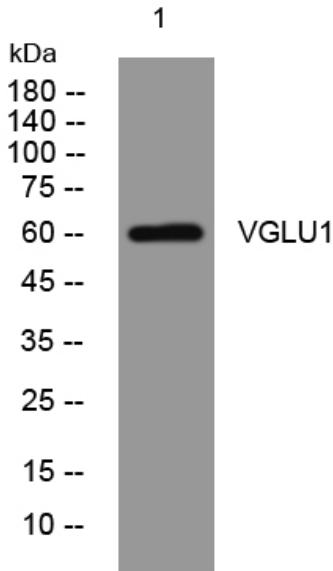
**matters needing attention**

Avoid repeated freezing and thawing!

**Usage suggestions**

This product can be used in immunological reaction related experiments. For more information, please consult technical personnel.

## Products Images



Western blot analysis of lysates from MCF-7 cells, primary antibody was diluted at 1:1000, 4° over night