



HOME2 rabbit pAb

Catalog No	BYab-07941
Isotype	IgG
Reactivity	Human; Mouse;Rat
Applications	WB
Gene Name	HOMER2
Protein Name	HOME2
Immunogen	Synthesized peptide derived from human HOME2 AA range: 17-67
Specificity	This antibody detects endogenous levels of HOME2 at Human/Mouse/Rat
Formulation	Liquid in PBS containing 50% glycerol, 0.5% BSA and 0.55% sodium azide.
Source	Polyclonal, Rabbit,IgG
Purification	The antibody was affinity-purified from rabbit serum by affinity-chromatography using specific immunogen.
Dilution	WB 1:500-2000
Concentration	1 mg/ml
Purity	≥90%
Storage Stability	-20°C/1 year
Synonyms	Homer protein homolog 2 (Homer-2) (Cupidin)
Observed Band	38kD
Cell Pathway	Cytoplasm . Cell membrane . Cell junction, synapse, postsynaptic density. Cell junction, synapse. Cell projection, stereocilium . Postsynaptic density of neuronal cells. The stabilization and clustering of the metabotropic glutamate receptors appears to be mediated by isoform 1 and isoform 2 at the cell surface.
Tissue Specificity	Brain,Frontal cortex,Lung,
Function	domain:The WH1 domain interacts with the PPXXF motif in GRM1, GRM5, RYR1, RYR2, ITPR1, SHANK 1 and SHANK3.,function:Postsynaptic density scaffolding protein. Binds and cross-links cytoplasmic regions of GRM1, GRM5, ITPR1, DNM3, RYR1, RYR2, SHANK1 and SHANK3. By physically linking GRM1 and GRM5 with ER-associated ITPR1 receptors it aids the coupling of surface receptors to intracellular calcium release. May also couple GRM1 to PI3 kinase through its interaction with AGAP2. Isoforms can be differently regulated and may play an important role in maintaining the plasticity at glutamatergic synapses.,similarity:Belongs to the Homer family.,similarity:Contains 1 WH1 domain.,subcellular location:Postsynaptic density of neuronal cells. The

Nanjing BYabscience technology Co.,Ltd



stabilization and clustering of the metabotropic glutamate receptors appears to be mediated by isoform 1 and isoform 2 at the cell surface.,subunit:Isoform 1

Background

This gene encodes a member of the homer family of dendritic proteins. Members of this family regulate group 1 metabotropic glutamate receptor function. The encoded protein is a postsynaptic density scaffolding protein. Alternative splicing results in multiple transcript variants. Two related pseudogenes have been identified on chromosome 14. [provided by RefSeq, Jun 2011],

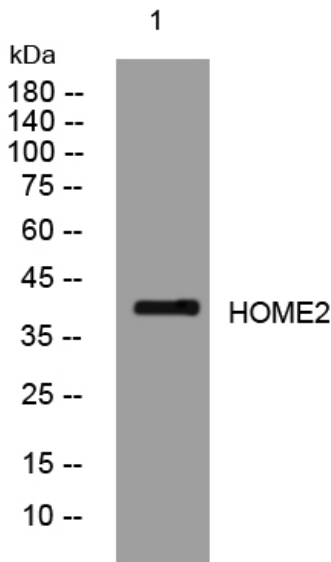
matters needing attention

Avoid repeated freezing and thawing!

Usage suggestions

This product can be used in immunological reaction related experiments. For more information, please consult technical personnel.

Products Images



Western blot analysis of lysates from HeLa cells, primary antibody was diluted at 1:1000, 4° over night