



# DCDC1 rabbit pAb

<b>Catalog No</b>	BYab-07936
<b>Isotype</b>	IgG
<b>Reactivity</b>	Human;Rat;Mouse;
<b>Applications</b>	WB
<b>Gene Name</b>	DCDC1
<b>Protein Name</b>	DCDC1
<b>Immunogen</b>	Synthesized peptide derived from human DCDC1 AA range: 111-161
<b>Specificity</b>	This antibody detects endogenous levels of DCDC1 at Human
<b>Formulation</b>	Liquid in PBS containing 50% glycerol, 0.5% BSA and 0.50% sodium azide.
<b>Source</b>	Polyclonal, Rabbit,IgG
<b>Purification</b>	The antibody was affinity-purified from rabbit serum by affinity-chromatography using specific immunogen.
<b>Dilution</b>	WB 1:500-2000
<b>Concentration</b>	1 mg/ml
<b>Purity</b>	≥90%
<b>Storage Stability</b>	-20°C/1 year
<b>Synonyms</b>	Doublecortin domain-containing protein 1
<b>Observed Band</b>	38kD
<b>Cell Pathway</b>	intracellular,cytoplasm,
<b>Tissue Specificity</b>	Fetal brain,
<b>Function</b>	similarity:Contains 1 doublecortin domain.,tissue specificity:Highly expressed in testis. Lower levels of expression in lung, kidney, and pancreas. Higher expression in fetal brain than in adult brain.,
<b>Background</b>	This gene encodes a member of the doublecortin family. The protein encoded by this gene is a hydrophilic, intracellular protein. It contains a single doublecortin domain and is unable to bind microtubules and to regulate microtubule polymerization. This gene is mainly expressed in adult testis. It does not have a mouse homolog. [provided by RefSeq, Sep 2010],
<b>matters needing attention</b>	Avoid repeated freezing and thawing!

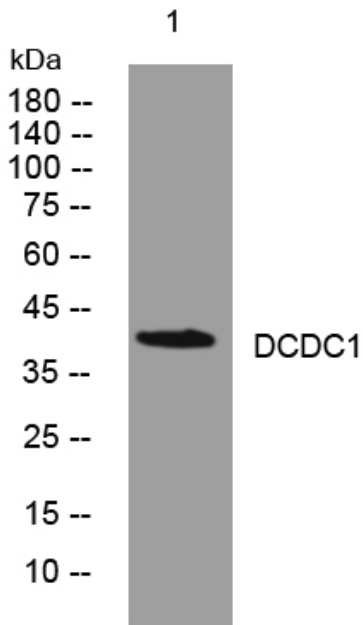
Nanjing BYabscience technology Co.,Ltd



**Usage suggestions**

This product can be used in immunological reaction related experiments. For more information, please consult technical personnel.

**Products Images**



Western blot analysis of lysates from MCF-7 cells, primary antibody was diluted at 1:1000, 4° over night