



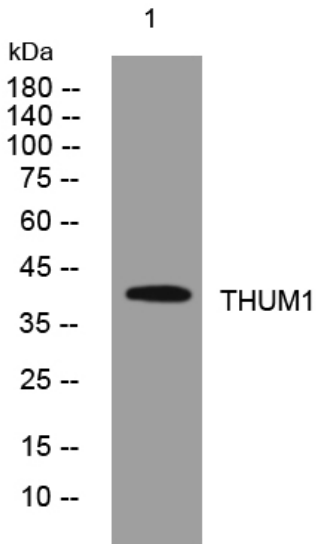
THUM1 rabbit pAb

| | |
|----------------------------------|---|
| Catalog No | BYab-07928 |
| Isotype | IgG |
| Reactivity | Human; Mouse |
| Applications | WB |
| Gene Name | THUMPD1 |
| Protein Name | THUM1 |
| Immunogen | Synthesized peptide derived from human THUM1 AA range: 91-141 |
| Specificity | This antibody detects endogenous levels of THUM1 at Human/Mouse |
| Formulation | Liquid in PBS containing 50% glycerol, 0.5% BSA and 0.42% sodium azide. |
| Source | Polyclonal, Rabbit,IgG |
| Purification | The antibody was affinity-purified from rabbit serum by affinity-chromatography using specific immunogen. |
| Dilution | WB 1:500-2000 |
| Concentration | 1 mg/ml |
| Purity | ≥90% |
| Storage Stability | -20°C/1 year |
| Synonyms | THUMP domain-containing protein 1 |
| Observed Band | 38kD |
| Cell Pathway | nucleoplasm, |
| Tissue Specificity | Endometrium,Epithelium,Liver,Lung, |
| Function | similarity:Belongs to the THUMPD1 family.,similarity:Contains 1 THUMP domain., |
| Background | |
| matters needing attention | Avoid repeated freezing and thawing! |
| Usage suggestions | This product can be used in immunological reaction related experiments. For more information, please consult technical personnel. |

Nanjing BYabscience technology Co.,Ltd



Products Images



Western blot analysis of lysates from U2OS cells,
primary antibody was diluted at 1:1000, 4° over night