



IGHA1 rabbit pAb

Catalog No	BYab-07921
Isotype	IgG
Reactivity	Human;Rat;Mouse;
Applications	WB
Gene Name	IGHA1
Protein Name	IGHA1
Immunogen	Synthesized peptide derived from human IGH A1 AA range: 118-168
Specificity	This antibody detects endogenous levels of IGH A1 at Human
Formulation	Liquid in PBS containing 50% glycerol, 0.5% BSA and 0.35% sodium azide.
Source	Polyclonal, Rabbit,IgG
Purification	The antibody was affinity-purified from rabbit serum by affinity-chromatography using specific immunogen.
Dilution	WB 1:500-2000
Concentration	1 mg/ml
Purity	≥90%
Storage Stability	-20°C/1 year
Synonyms	Ig alpha-1 chain C region
Observed Band	38kD
Cell Pathway	Secreted . Cell membrane .
Tissue Specificity	Bile,Colon,Mammary gland,Stomach mucosa,
Function	disease:A chromosomal aberration involving IGH A1 is found in multiple myeloma (MM) cell lines. Translocation t(1;14)(q21;q32) that forms a FCRL4-IGH A1 fusion protein.,function:Ig alpha is the major immunoglobulin class in body secretions. It may serve both to defend against local infection and to prevent access of foreign antigens to the general immunologic system.,PTM:3-Hydroxykynurenine, an oxidized tryptophan metabolite that is common in biological fluids, reacts with alpha-1-microglobulin to form heterogeneous polycyclic chromophores including hydroxanthommatin. The chromophore reacts with accessible cysteines forming non-reducible thioether cross-links with Ig alpha-1 chain C region Cys-352.,similarity:Contains 3 Ig-like (immunoglobulin-like) domains.,subunit:Monomeric or polymeric.,

Nanjing BYabscience technology Co.,Ltd



Background

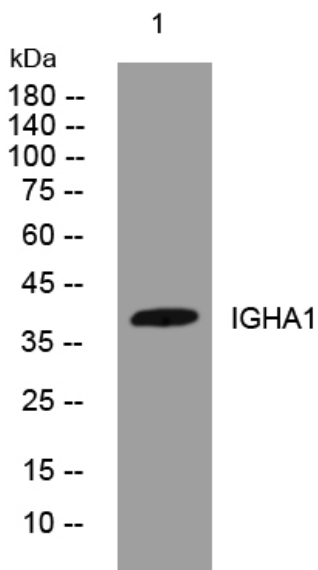
matters needing attention

Avoid repeated freezing and thawing!

Usage suggestions

This product can be used in immunological reaction related experiments. For more information, please consult technical personnel.

Products Images



Western blot analysis of lysates from MCF-7 cells, primary antibody was diluted at 1:1000, 4°over night