



FEZ2 rabbit pAb

Catalog No	BYab-07920
Isotype	IgG
Reactivity	Human; Mouse;Rat
Applications	WB
Gene Name	FEZ2
Protein Name	FEZ2
Immunogen	Synthesized peptide derived from human FEZ2 AA range: 190-240
Specificity	This antibody detects endogenous levels of FEZ2 at Human/Mouse/Rat
Formulation	Liquid in PBS containing 50% glycerol, 0.5% BSA and 0.34% sodium azide.
Source	Polyclonal, Rabbit,IgG
Purification	The antibody was affinity-purified from rabbit serum by affinity-chromatography using specific immunogen.
Dilution	WB 1:500-2000
Concentration	1 mg/ml
Purity	≥90%
Storage Stability	-20°C/1 year
Synonyms	Fasciculation and elongation protein zeta-2 (Zygin II) (Zygin-2)
Observed Band	38kD
Cell Pathway	cytoplasm,axon,
Tissue Specificity	Expressed in nonneural tissues, such as heart, lung, spleen, muscle, testis, placenta and melanocytes.
Function	function:Involved in axonal outgrowth and fasciculation.,similarity:Belongs to the zygin family.,subunit:Interacts with synaptotagmin.,tissue specificity:Expressed in nonneural tissues, such as heart, lung, spleen, muscle, testis, placenta and melanocytes.,
Background	This gene is an ortholog of the C. elegans unc-76 gene, which is necessary for normal axonal bundling and elongation within axon bundles. Other orthologs include the rat gene that encodes zygin II, which can bind to synaptotagmin. [provided by RefSeq, Jul 2008],
matters needing attention	Avoid repeated freezing and thawing!

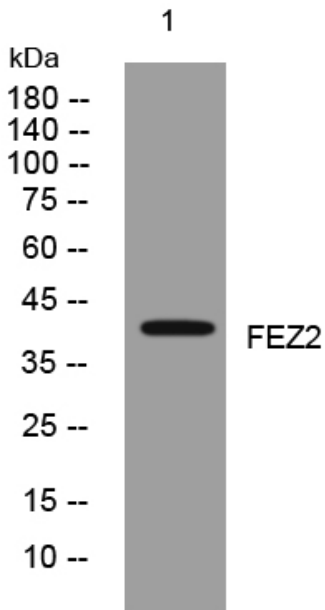
Nanjing BYabscience technology Co.,Ltd



Usage suggestions

This product can be used in immunological reaction related experiments. For more information, please consult technical personnel.

Products Images



Western blot analysis of lysates from KB cells, primary antibody was diluted at 1:1000, 4° over night