



# DND1 rabbit pAb

<b>Catalog No</b>	BYab-07919
<b>Isotype</b>	IgG
<b>Reactivity</b>	Human; Mouse
<b>Applications</b>	WB
<b>Gene Name</b>	DND1 RBMS4
<b>Protein Name</b>	DND1
<b>Immunogen</b>	Synthesized peptide derived from human DND1 AA range: 94-144
<b>Specificity</b>	This antibody detects endogenous levels of DND1 at Human/Mouse
<b>Formulation</b>	Liquid in PBS containing 50% glycerol, 0.5% BSA and 0.33% sodium azide.
<b>Source</b>	Polyclonal, Rabbit,IgG
<b>Purification</b>	The antibody was affinity-purified from rabbit serum by affinity-chromatography using specific immunogen.
<b>Dilution</b>	WB 1:500-2000
<b>Concentration</b>	1 mg/ml
<b>Purity</b>	≥90%
<b>Storage Stability</b>	-20°C/1 year
<b>Synonyms</b>	Dead end protein homolog 1 (RNA-binding motif, single-stranded-interacting protein 4)
<b>Observed Band</b>	38kD
<b>Cell Pathway</b>	Nucleus . Cytoplasm . Perinuclear germ granules, also called germ plasm or chromatoid body. Colocalizes in perinuclear sites with APOBEC3 (By similarity) .
<b>Tissue Specificity</b>	Brain,
<b>Function</b>	function:May play a role during primordial germ cell (PGC) development. However, does not seem to be essential for PGC migration.,similarity:Contains 2 RRM (RNA recognition motif) domains.,
<b>Background</b>	This gene encodes a protein that binds to microRNA-targeting sequences of mRNAs, inhibiting microRNA-mediated repression. Reduced expression of this gene has been implicated in tongue squamous cell carcinoma. Two pseudogenes of this gene are located on the long arm of chromosome 17. [provided by RefSeq, Dec 2010],

Nanjing BYabscience technology Co.,Ltd



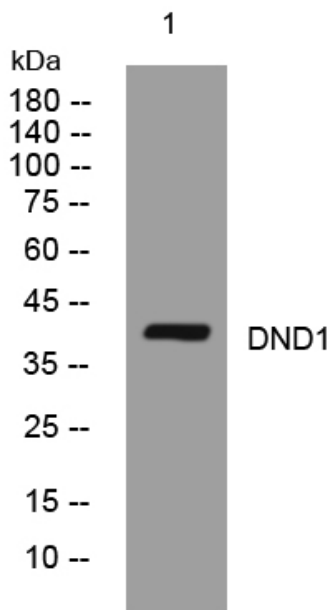
**matters needing attention**

Avoid repeated freezing and thawing!

**Usage suggestions**

This product can be used in immunological reaction related experiments. For more information, please consult technical personnel.

**Products Images**



Western blot analysis of lysates from Jarkat cells, primary antibody was diluted at 1:1000, 4° over night